

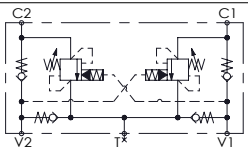
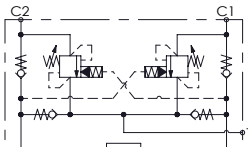
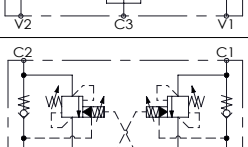
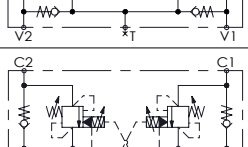


ATLANTIC
Fluid Tech

SECTION
9

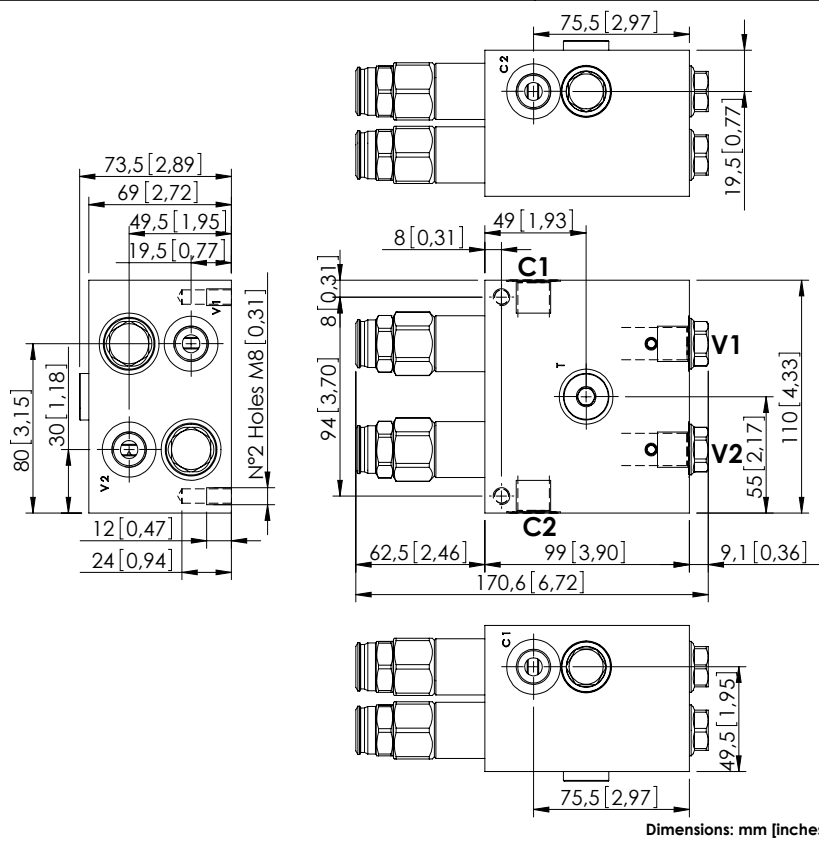
Motion
Control
Valves

MOTION CONTROL VALVES

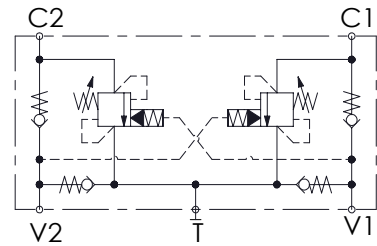
Hydraulic scheme	Valve description	Valve type	Rated flow l/min (gpm)	Max. pressure bar (psi)	Installation	Main port size	Page
	MNDN-040-LLST	Stabilized	40 (11)	300 (4300)	In line	G 3/8"	9.01.010
	MNDN-120-LLST	Stabilized	120 (32)	300 (4300)	In line	G 3/4"	9.01.020
	MNDN-200-LLST	Stabilized	200 (53)	300 (4300)	In line	G 1"	9.01.030
	MNDN-040-LLSV	Stabilized, with brake release	40 (11)	300 (4300)	In line	G 3/8"	9.02.040
	MNDN-120-LLSV	Stabilized, with brake release	120 (32)	300 (4300)	In line	G 3/4"	9.02.050
	MNDN-200-LLSV	Stabilized, with brake release	200 (53)	300 (4300)	In line	G 1"	9.02.060
	MNDN-040-LLPT	Stabilized and brake, dual setting	40 (11)	300 (4300)	In line	G 3/8"	9.03.070
	MNDN-120-LLPT	Stabilized and brake, dual setting	120 (32)	300 (4300)	In line	G 3/4"	9.03.080
	MNDN-200-LLPT	Stabilized and brake, dual setting	200 (53)	300 (4300)	In line	G 1"	9.03.090
	MNDN-040-LLPV	Stabilized and brake, dual setting, with brake release	40 (11)	300 (4300)	In line	G 3/8"	9.04.100
	MNDN-120-LLPV	Stabilized and brake, dual setting, with brake release	120 (32)	300 (4300)	In line	G 3/4"	9.04.110
	MNDN-200-LLPV	Stabilized and brake, dual setting, with brake release	200 (53)	300 (4300)	In line	G 1"	9.04.120

MNDN-040-LLST

STABILIZED



Dimensions: mm [inches]



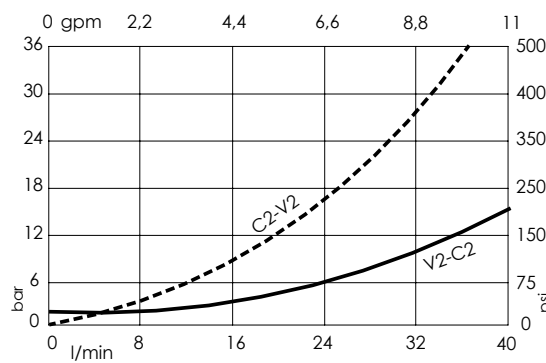
SPECIFICATIONS

Max. operating pressure:	300 bar (4300 psi)
Rated flow:	40 l/min (11 gpm)
Manifold:	Aluminium
Weight:	2,65 kg (5,84 lbs)
Contamination class to ISO 4406:	See technical spec.
MTTF _a :	150 - 1200 years: See technical spec.

NOTES

Setting: at least 1.3 times the load induced pressure.
 For other configurations/quick codes not available in this catalogue page please consult factory

CURVES

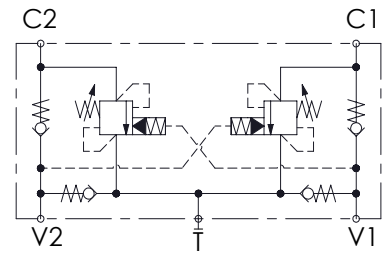
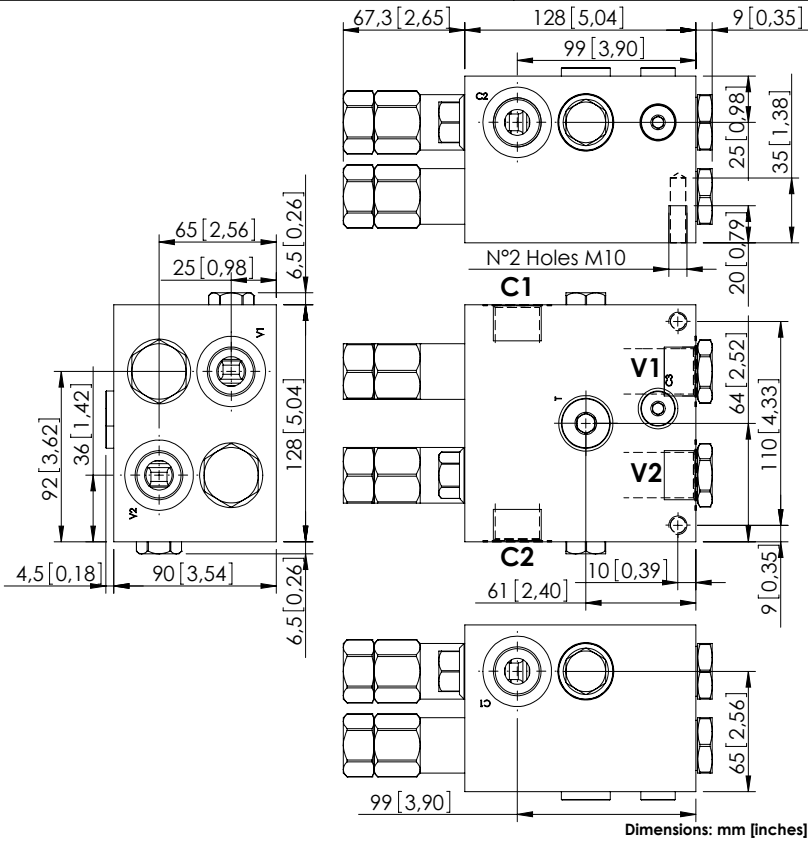


ORDERING CODES

Quick code	Description	Pilot ratio	Main ports size	Standard setting Q=5 l/min (1,3 gpm)	Adjustment range	Pressure increase
MN000023	MNDN-040-LLST-09-G38-N300	9:1	V1,V2,C1,C2: G 3/8" T: G 3/8"	150 bar (2200 psi)	100-300 bar (1400-4300 psi)	119 bar/turn (1700 psi/turn)
MN000029	MNDN-040-LLST-03-G38-N300	3:1	V1,V2,C1,C2: G 3/8" T: G 3/8"	150 bar (2200 psi)	100-300 bar (1400-4300 psi)	119 bar/turn (1700 psi/turn)

MNDN-120-LLST

STABILIZED



SPECIFICATIONS

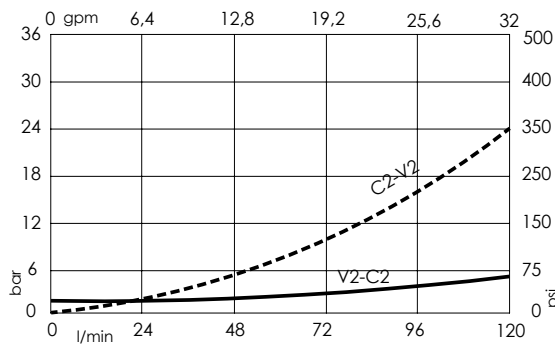
Max. operating pressure:	300 bar (4300 psi)
Rated flow:	120 l/min (32 gpm)
Manifold:	Aluminium
Weight:	5,06 kg (11,16 lbs)
Contamination class to ISO 4406:	See technical spec.
MTTF _a :	150 - 1200 years: See technical spec.

NOTES

Setting: at least 1.3 times the load induced pressure.

For other configurations/quick codes not available in this catalogue page please consult factory

CURVES



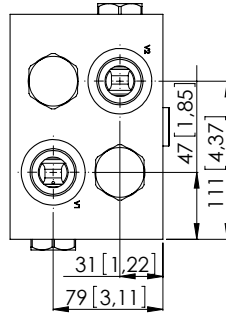
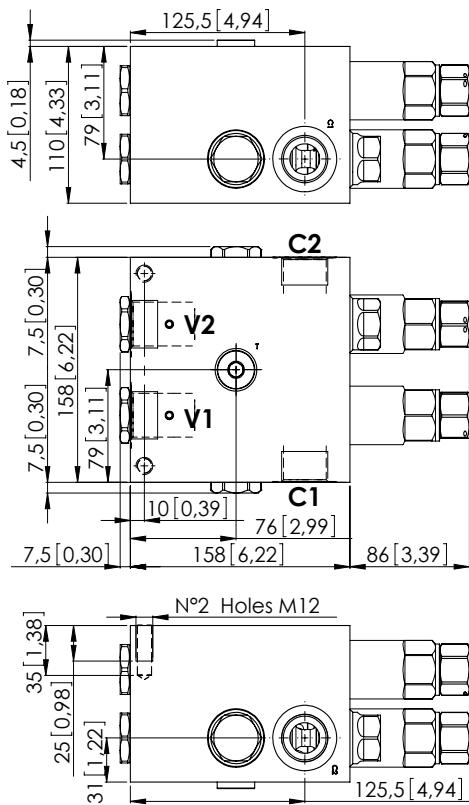
ORDERING CODES

Quick code	Description	Pilot ratio	Main ports size	Standard setting Q=5 l/min (1,3 gpm)	Adjustment range	Pressure increase
MN000013	MNDN-120-LLST-08-G34-N300	8:1	V1,V2,C1,C2 : G3/4" T : G 1/2"	150 bar (2200 psi)	100-300 bar (1400-4300 psi)	111 bar/turn (1600 psi/turn)
MN000012	MNDN-120-LLST-03-G34-N300	3:1	V1,V2,C1,C2 : G3/4" T : G 1/2"	150 bar (2200 psi)	70-210 bar (1000-3000 psi)	73 bar/turn (1000 psi/turn)

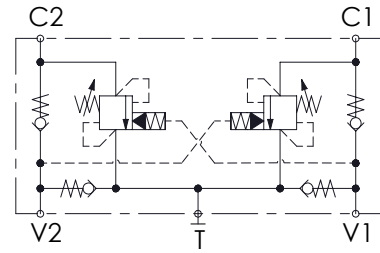
MOTION CONTROL

MNDN-200-LLST

STABILIZED



Dimensions: mm [inches]



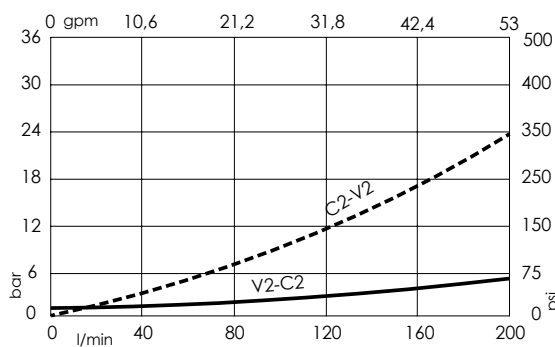
SPECIFICATIONS

Max. operating pressure:	300 bar (4300 psi)
Rated flow:	200 l/min (53 gpm)
Manifold:	Aluminium
Weight:	9,5 kg (20,97 lbs)
Contamination class to ISO 4406:	See technical spec.
MTTF _d :	150 - 1200 years: See technical spec.

NOTES

Setting: at least 1.3 times the load induced pressure.
 For other configurations/quick codes not available in this catalogue page please consult factory

CURVES

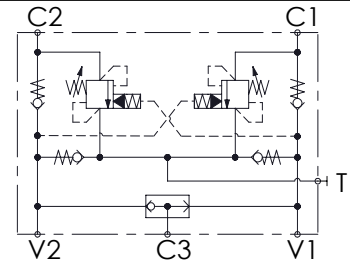
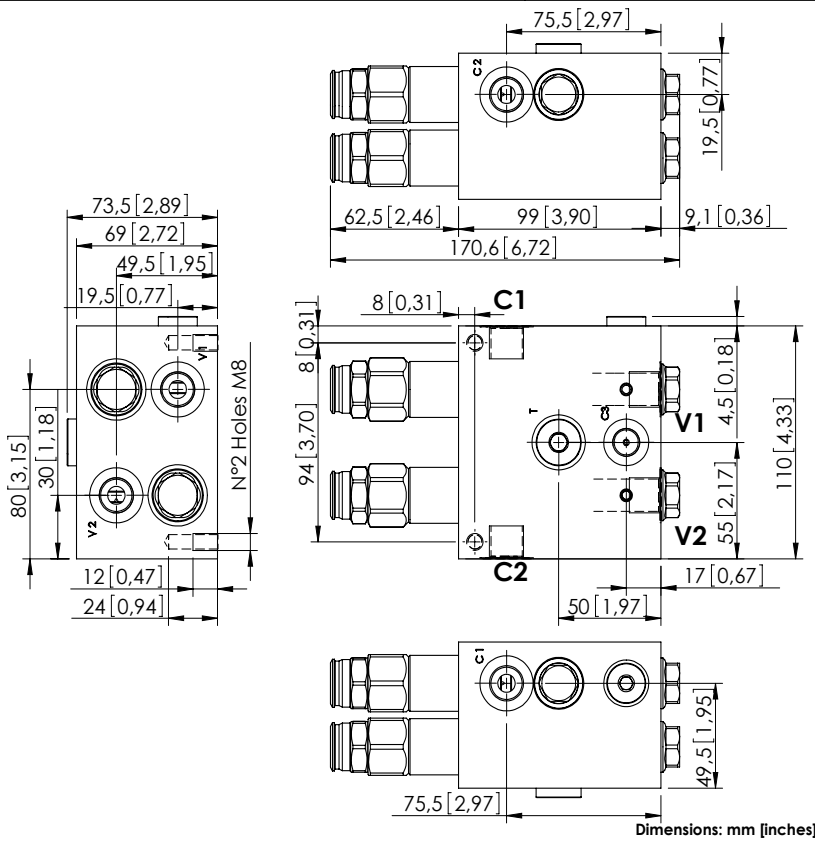


ORDERING CODES

Quick code	Description	Pilot ratio	Main ports size	Standard setting Q=5 l/min (1,3 gpm)	Adjustment range	Pressure increase
MN000020	MNDN-200-LLST-08-G10-N300	8:1	V1,V2,C1,C2: G1" T: G1/2"	150 bar (2200 psi)	120-300 bar (1700-4300 psi)	65 bar/turn (900 psi/turn)

MNDN-040-LLSV

STABILIZED WITH BRAKE RELEASE



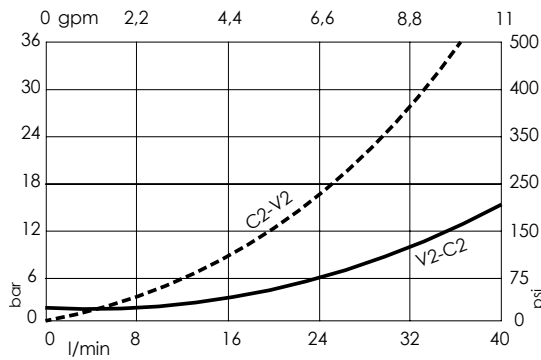
SPECIFICATIONS

Max. operating pressure:	300 bar (4300 psi)
Rated flow:	40 l/min (11 gpm)
Manifold:	Aluminium
Weight:	2,66 kg (5,86 lbs)
Contamination class to ISO 4406:	See technical spec.
MTF _a :	150 - 1200 years: See technical spec.

NOTES

Setting: at least 1.3 times the load induced pressure.
 For other configurations/quick codes not available in this catalogue page please consult factory

CURVES



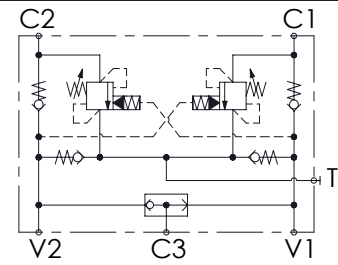
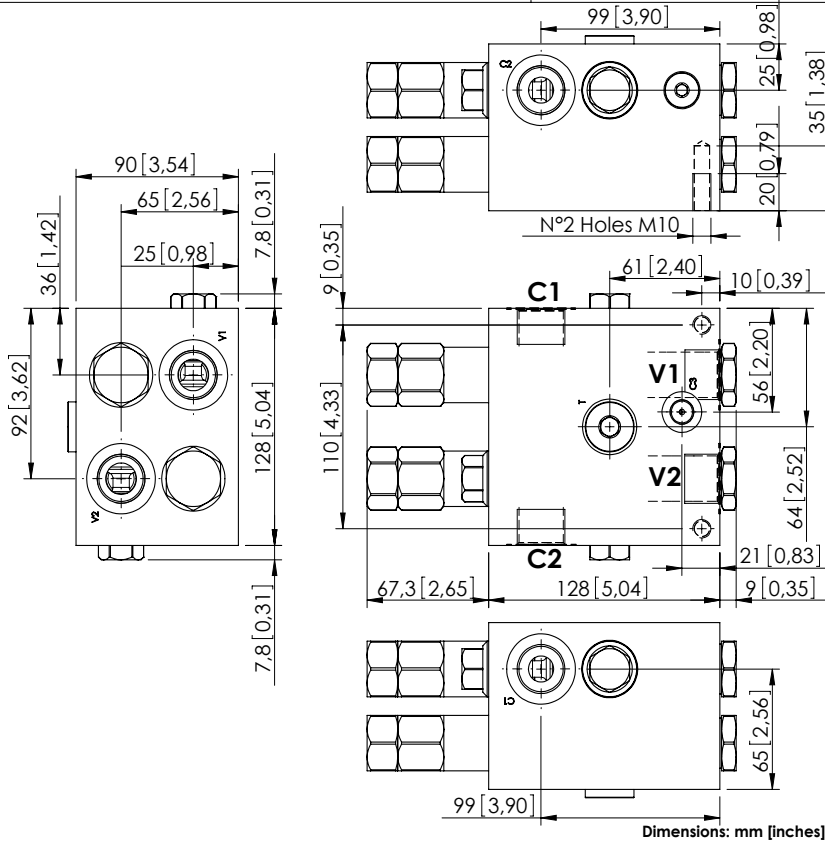
ORDERING CODES

Quick code	Description	Pilot ratio	Main ports size	Standard setting Q=5 l/min (1.3 gpm)	Adjustment range	Pressure increase
MN000008	MNDN-040-LLSV-09-G38-N300	9:1	V1,V2,C1,C2,T: G 3/8" C3: G 1/4"	150 bar (2200 psi)	100-300 bar (1400-4300 psi)	119 bar/turn (1700 psi/turn)
MN000032	MNDN-040-LLSV-09-G38-N200	9:1	V1,V2,C1,C2,T: G 3/8" C3: G 1/4"	150 bar (2200 psi)	70-150 bar (1000-2200 psi)	63 bar/turn (900 psi/turn)
MN000033	MNDN-040-LLSV-03-G38-N300	3:1	V1,V2,C1,C2,T: G 3/8" C3: G 1/4"	150 bar (2200 psi)	100-300 bar (1400-4300 psi)	119 bar/turn (1700 psi/turn)
MN000034	MNDN-040-LLSV-03-G38-N200	3:1	V1,V2,C1,C2,T: G 3/8" C3: G 1/4"	150 bar (2200 psi)	70-150 bar (1000-2200 psi)	63 bar/turn (900 psi/turn)

MOTION CONTROL

MNDN-120-LLSV

STABILIZED
WITH BRAKE RELEASE



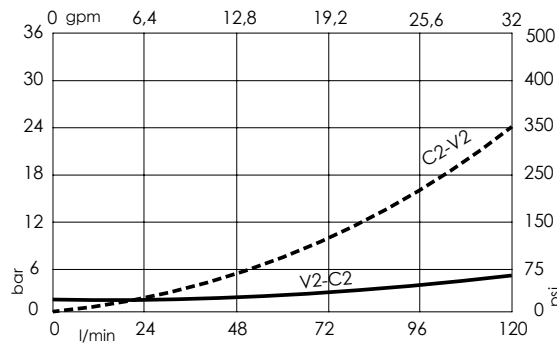
SPECIFICATIONS

Max. operating pressure:	300 bar (4300 psi)
Rated flow:	120 l/min (32 gpm)
Manifold:	Aluminium
Weight:	5,03 kg (11,09 lbs)
Contamination class to ISO 4406:	See technical spec.
MTF _d :	150 - 1200 years: See technical spec.

NOTES

Setting: at least 1.3 times the load induced pressure.
For other configurations/quick codes not available in this catalogue page please consult factory

CURVES



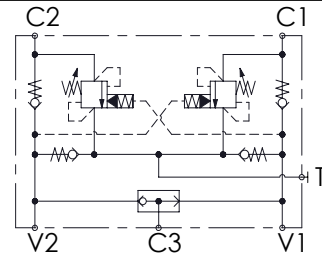
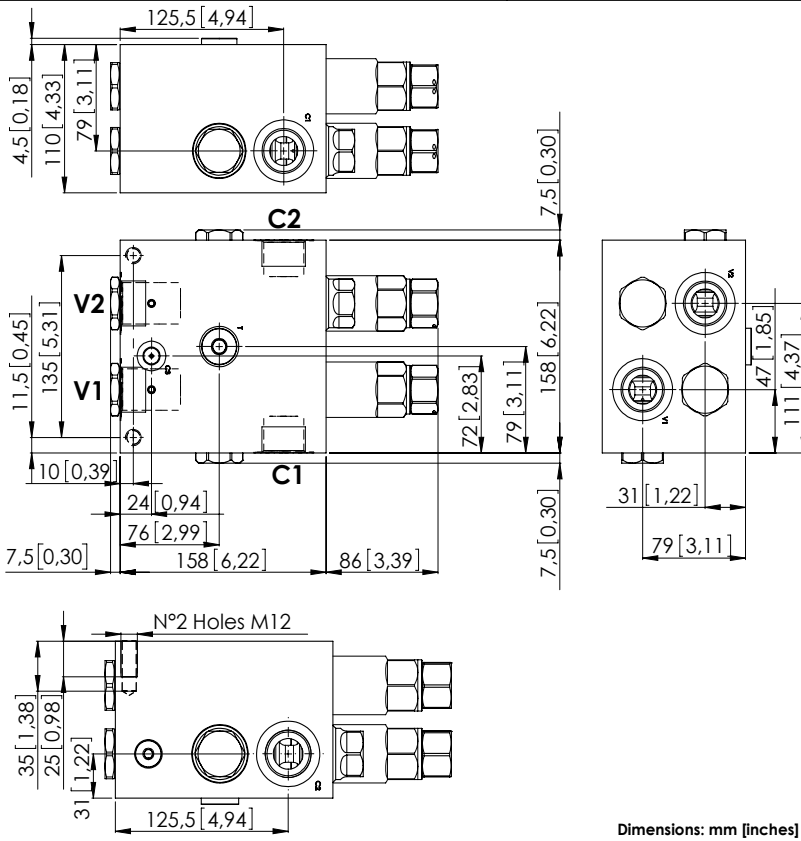
ORDERING CODES

Quick code	Description	Pilot ratio	Main ports size	Standard setting Q=5 l/min (1.3 gpm)	Adjustment range	Pressure increase
MN000014	MNDN-120-LLSV-08-G34-N300	8:1	V1,V2,C1,C2: G 3/4" T: G 1/2"; C3: G 1/4"	150 bar (2200 psi)	100-300 bar (1400-4300 psi)	111 bar/turn (1600 psi/turn)
MN000015	MNDN-120-LLSV-03-G34-N300	3:1	V1,V2,C1,C2: G 3/4" T: G 1/2"; C3: G 1/4"	150 bar (2200 psi)	100-300 bar (1400-4300 psi)	111 bar/turn (1600 psi/turn)

MOTION CONTROL

MNDN-200-LLSV

STABILIZED
WITH BRAKE RELEASE



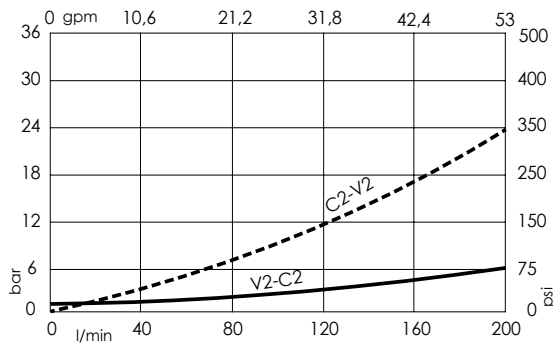
SPECIFICATIONS

Max. operating pressure:	300 bar (4300 psi)
Rated flow:	200 l/min (53 gpm)
Manifold:	Aluminium
Weight:	9,5 kg (20,97 lbs)
Contamination class to ISO 4406:	See technical spec.
MTF _a :	150 - 1200 years: See technical spec.

NOTES

Setting: at least 1.3 times the load induced pressure.
For other configurations/quick codes not available in this catalogue page please consult factory

CURVES



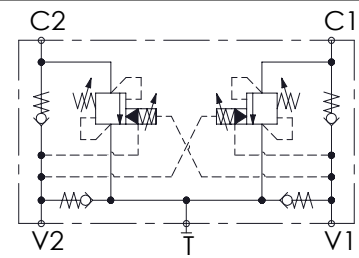
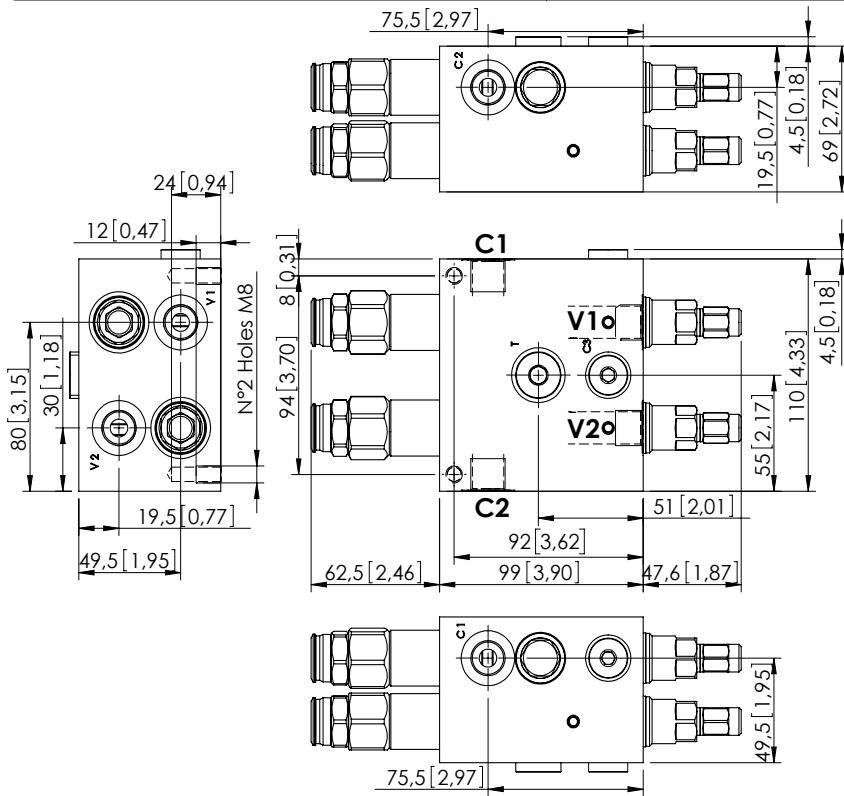
ORDERING CODES

Quick code	Description	Pilot ratio	Main ports size	Standard setting <small>Q=5 l/min (1.3 gpm)</small>	Adjustment range	Pressure increase
MN000021	MNDN-200-LLSV-08-G10-N300	8:1	V1,V2,C1,C2: G1" T: G1/2"; C3: G 1/4"	150 bar (2200 psi)	120-300 bar (1700-4300 psi)	65 bar/turn (900 psi/turn)

MOTION CONTROL

MNDN-040-LLPT

SOFT STOP
DUAL SETTING



SPECIFICATIONS

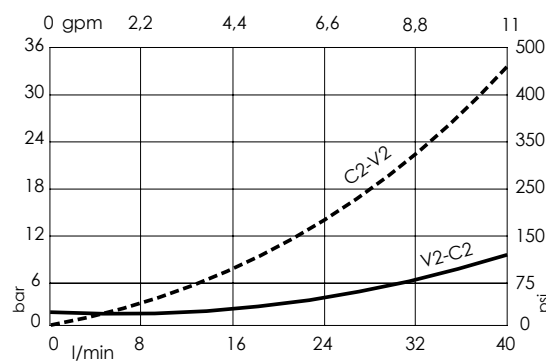
Max. operating pressure:	300 bar (4300 psi)
Rated flow:	40 l/min (11 gpm)
Manifold:	Aluminium
Weight:	2,78 kg (6.13 lbs)
Contamination class to ISO 4406:	See technical spec.
MTF _a :	150 - 1200 years: See technical spec.

Dimensions: mm [inches]

NOTES

Setting: at least 1.3 times the load induced pressure.
For other configurations/quick codes not available in this catalogue page please consult factory

CURVES



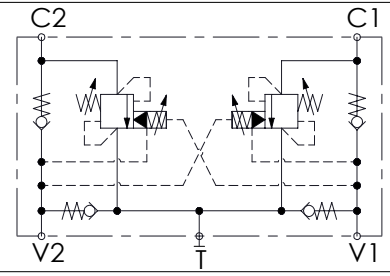
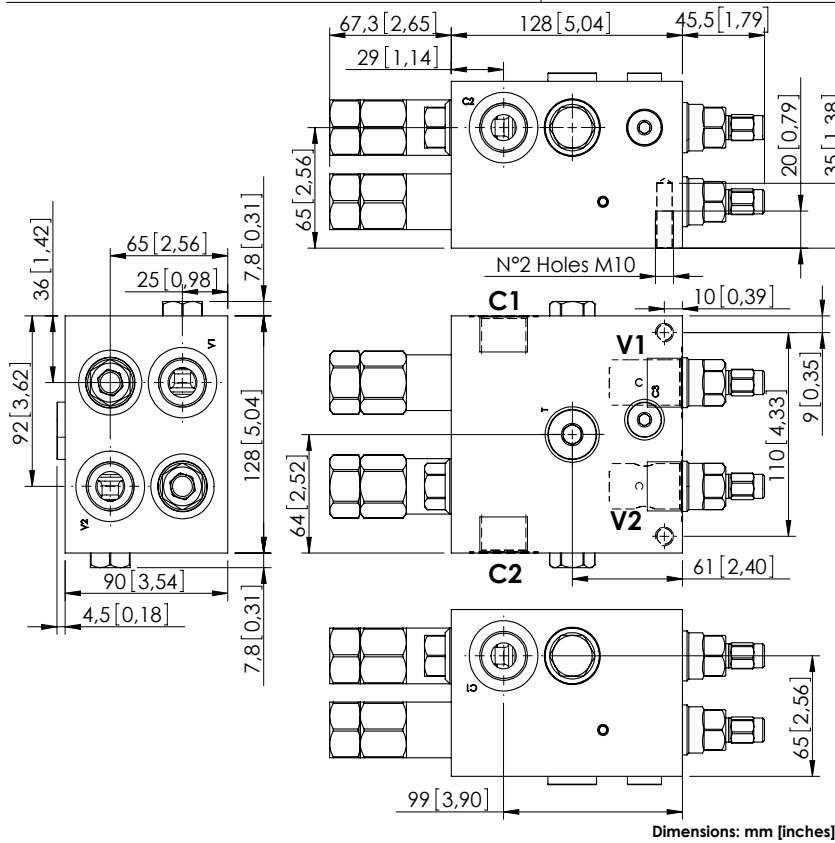
ORDERING CODES

Quick code	Description	Pilot ratio	Main ports size	Standard setting Q=5 l/min (1.3 gpm)	Adjustment range	Pressure increase
MN000024	MNDN-040-LLPT-09-G38-N300	9:1	V1,V2,C1,C2: G3/8" T: G3/8"	Start: 300 bar (4300 psi) Brake: 120 bar (1700 psi)	100-300 bar (1400-4300 psi)	119 bar/turn (1700 psi/turn)

Revision B1

MNDN-120-LLPT

SOFT STOP
DUAL SETTING



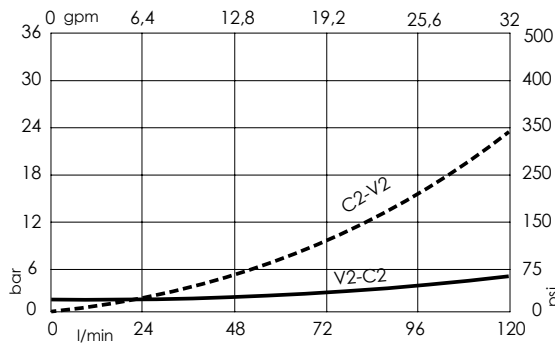
SPECIFICATIONS

Max. operating pressure:	300 bar (4300 psi)
Rated flow:	120 l/min (32 gpm)
Manifold:	Aluminium
Weight:	5,14 kg (11,33 lbs)
Contamination class to ISO 4406:	See technical spec.
MTTF _a :	150 - 1200 years: See technical spec.

NOTES

Setting: at least 1.3 times the load induced pressure.
For other configurations/quick codes not available in this catalogue page please consult factory

CURVES



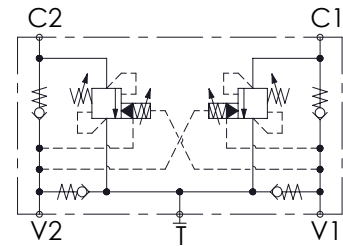
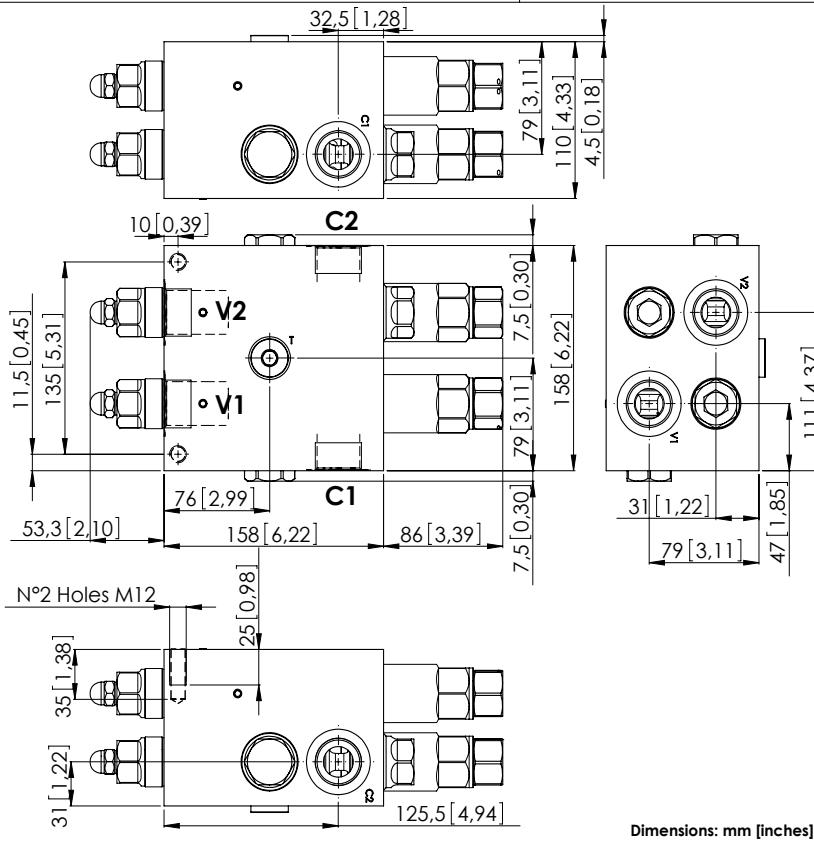
ORDERING CODES

Quick code	Description	Pilot ratio	Main ports size	Standard setting Q=5 l/min (1,3 gpm)	Adjustment range	Pressure increase
MN000017	MNDN-120-LLPT-08-G34-N300	8:1	V1,V2,C1,C2 : G3/4" T : G 1/2"	Start: 300 bar (4300 psi) Brake: 120 bar (1700 psi)	100-300 bar (1400-4300 psi)	111 bar/turn (1700 psi/turn)
MN000047	MNDN-120-LLPT-03-G34-N300	3:1	V1,V2,C1,C2 : G3/4" T : G 1/2"	Start: 300 bar (4300 psi) Brake: 120 bar (1700 psi)	100-300 bar (1400-4300 psi)	111 bar/turn (1700 psi/turn)
MN000016	MNDN-120-LLPT-03-G34-N200	3:1	V1,V2,C1,C2 : G3/4" T : G 1/2"	Start: 180 bar (2600 psi) Brake: 90 bar (1300 psi)	70-210 bar (1000-3000 psi)	73 bar/turn (1000 psi/turn)

MOTION CONTROL

MNDN-200-LLPT

SOFT STOP
DUAL SETTING



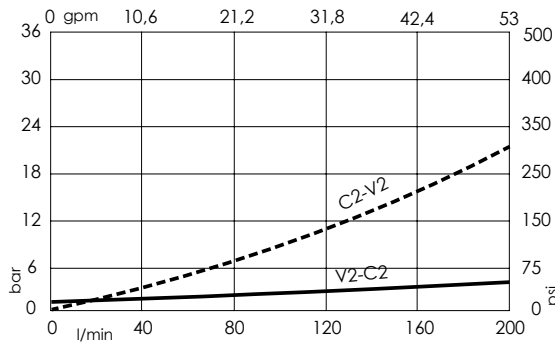
SPECIFICATIONS

Max. operating pressure:	300 bar (4300 psi)
Rated flow:	200 l/min (53 gpm)
Manifold:	Aluminium
Weight:	9,8 kg (21,61 lbs)
Contamination class to ISO 4406:	See technical spec.
MTTF _a :	150 - 1200 years: See technical spec.

NOTES

Setting: at least 1.3 times the load induced pressure.
For other configurations/quick codes not available in this catalogue page please consult factory

CURVES



ORDERING CODES

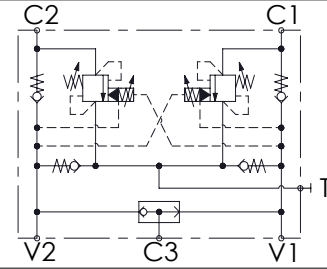
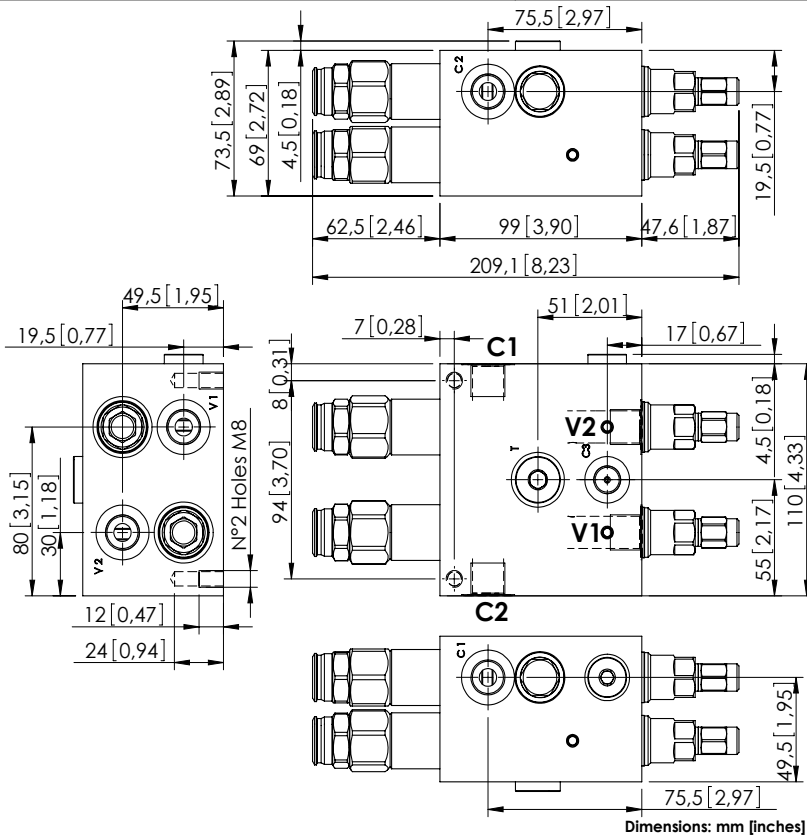
Quick code	Description	Pilot ratio	Main ports size	Standard setting Q=5 l/min (1,3 gpm)	Adjustment range	Pressure increase
MN000004	MNDN-200-LLPT-08-G10-N300	8:1	V1,V2,C1,C2 : G1" T : G1/2"	Start: 300 bar (4300 psi) Brake: 120 bar (1700 psi)	100-300 bar (1400-4300 psi)	65 bar/turn (900 psi/turn)

Revision B1

MOTION CONTROL

MNDN-040-LLPV

SOFT STOP
DUAL SETTING
WITH BRAKE RELEASE



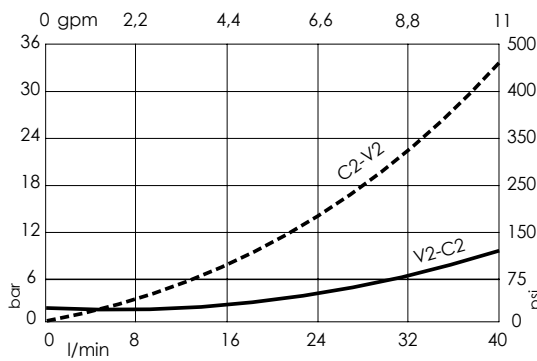
SPECIFICATIONS

Max. operating pressure:	300 bar (4300 psi)
Rated flow:	40 l/min (11 gpm)
Manifold:	Aluminium
Weight:	2,76 kg (6,09 lbs)
Contamination class to ISO 4406:	See technical spec.
MTF _d :	150 - 1200 years: See technical spec.

NOTES

Setting: at least 1.3 times the load induced pressure.
For other configurations/quick codes not available in this catalogue page please consult factory

CURVES



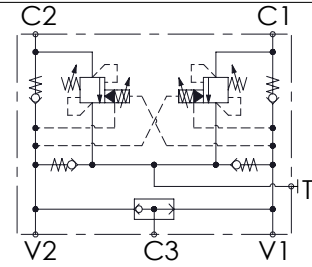
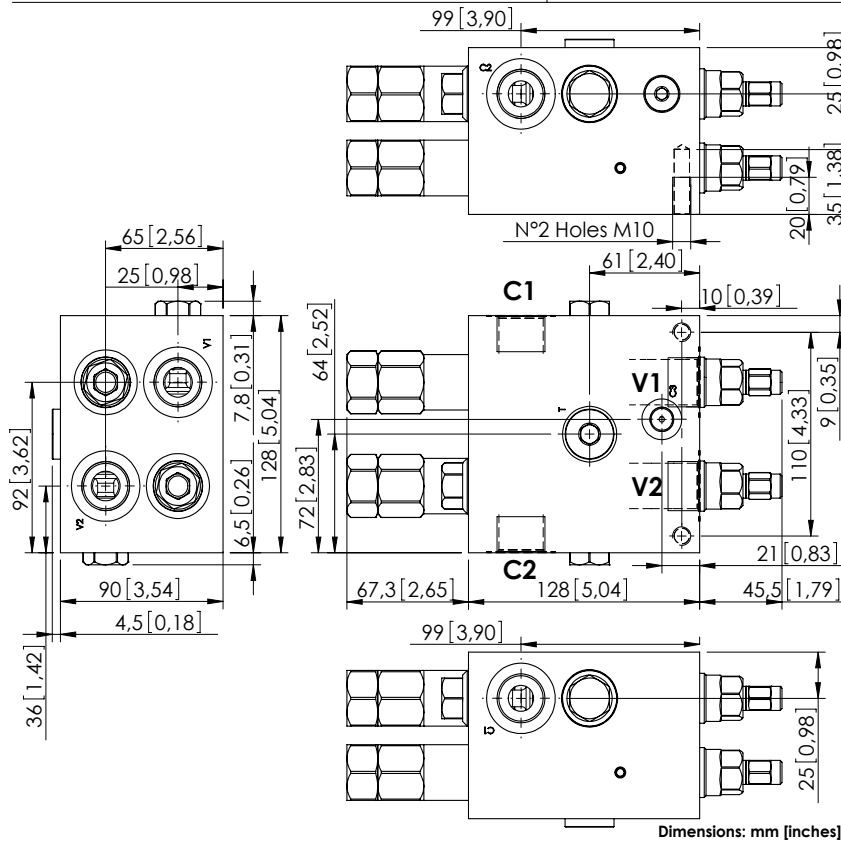
ORDERING CODES

Quick code	Description	Pilot ratio	Main ports size	Standard setting Q=5 l/min (1,3 gpm)	Adjustment range	Pressure increase
MN000019	MNDN-040-LLPV-09-G38-N300	9:1	V1,V2,C1,C2,T: G 3/8" C3 : G 1/4"	Start: 300 bar (4300 psi) Brake: 120 bar (1700 psi)	100-300 bar (1400-4300 psi)	119 bar/turn (1700 psi/turn)
MN000028	MNDN-040-LLPV-09-G38-N200	9:1	V1,V2,C1,C2,T: G 3/8" C3 : G 1/4"	Start: 300 bar (4300 psi) Brake: 90 bar (1300 psi)	60-210 bar (850-3000 psi)	63 bar/turn (900 psi/turn)

MOTION CONTROL

MNDN-120-LLPV

SOFT STOP
DUAL SETTING
WITH BRAKE RELEASE



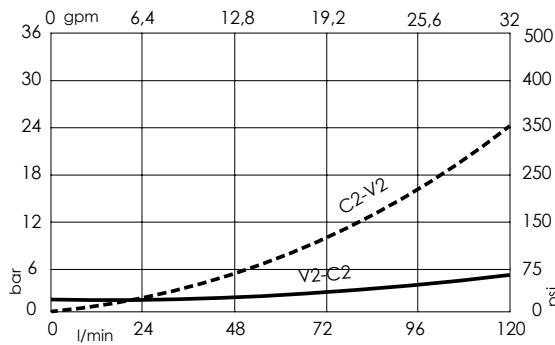
SPECIFICATIONS

Max. operating pressure:	300 bar (4300 psi)
Rated flow:	120 l/min (32 gpm)
Manifold:	Aluminium
Weight:	5,12 kg (11,29 lbs)
Contamination class to ISO 4406:	See technical spec.
MTTF _a :	150 - 1200 years: See technical spec.

NOTES

Setting: at least 1.3 times the load induced pressure.
For other configurations/quick codes not available in this catalogue page please consult factory

CURVES



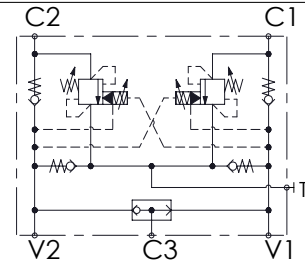
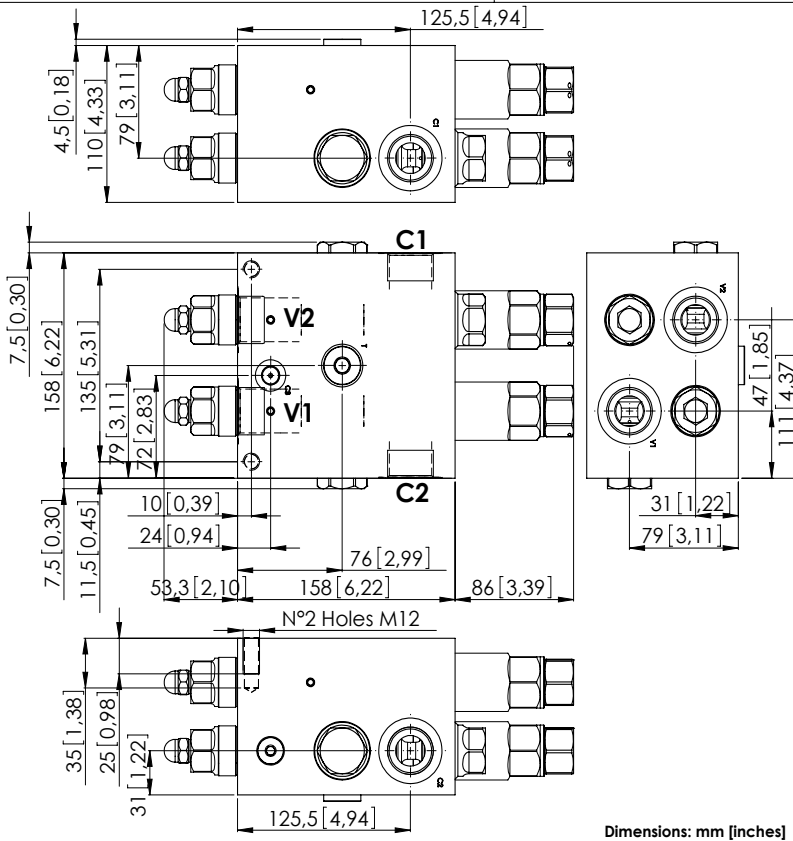
ORDERING CODES

Quick code	Description	Pilot ratio	Main ports size	Standard setting Q=5 l/min (1,3 gpm)	Adjustment range	Pressure increase
MN000010	MNDN-120-LLPV-08-G34-N300	8:1	V1,V2,C1,C2: G 3/4" T: G 1/2"; C3: G 1/4"	Start: 300 bar (4300 psi) Brake: 120 bar (1700 psi)	100-300 bar (1400-4300 psi)	111 bar/turn (1600 psi/turn)
MN000001	MNDN-120-LLPV-08-G34-N200	8:1	V1,V2,C1,C2: G 3/4" T: G 1/2"; C3: G 1/4"	Start: 180 bar (2600 psi) Brake: 90 bar (1300 psi)	70-210 bar (1000-3000 psi)	73 bar/turn (1000 psi/turn)
MN000018	MNDN-120-LLPV-03-G34-N300	3:1	V1,V2,C1,C2: G 3/4" T: G 1/2"; C3: G 1/4"	Start: 300 bar (4300 psi) Brake: 120 bar (1700 psi)	100-300 bar (1400-4300 psi)	111 bar/turn (1600 psi/turn)
MN000048	MNDN-120-LLPV-03-G34-N200	3:1	V1,V2,C1,C2: G 3/4" T: G 1/2"; C3: G 1/4"	Start: 180 bar (2600 psi) Brake: 90 bar (1300 psi)	70-210 bar (1000-3000 psi)	73 bar/turn (1000 psi/turn)

MOTION CONTROL

MNDN-200-LLPV

SOFT STOP
DUAL SETTING
WITH BRAKE RELEASE



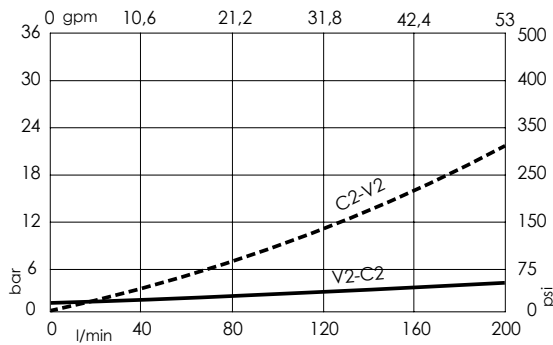
SPECIFICATIONS

Max. operating pressure:	300 bar (4300 psi)
Rated flow:	200 l/min (53 gpm)
Manifold:	Aluminium
Weight:	9,81 kg (21,63 lbs)
Contamination class to ISO 4406:	See technical spec.
MTF _a :	150 - 1200 years: See technical spec.

NOTES

Setting: at least 1.3 times the load induced pressure.
For other configurations/quick codes not available in this catalogue page please consult factory

CURVES



ORDERING CODES

Quick code	Description	Pilot ratio	Main ports size	Standard setting Q=5 l/min (1,3 gpm)	Adjustment range	Pressure increase
MN000022	MNDN-200-LLPV-08-G10-N300	8:1	V1,V2,C1,C2 : G1" T : G1/2"; C3 : G 1/4"	Start: 300 bar (4300 psi) Brake:120 bar (1700 psi)	100-300 bar (1400-4300 psi)	65 bar/turn (900 psi/turn)