

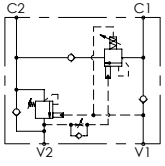
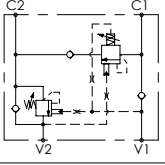
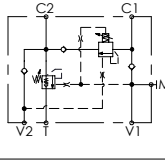
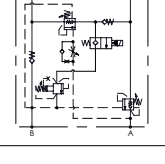
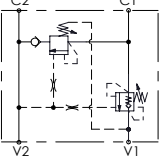
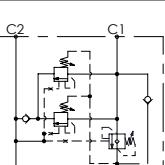


ATLANTIC
Fluid Tech

**SECTION
7**

Regeneratives
Valves

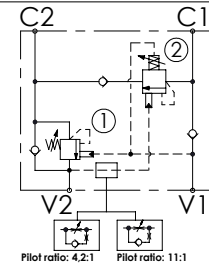
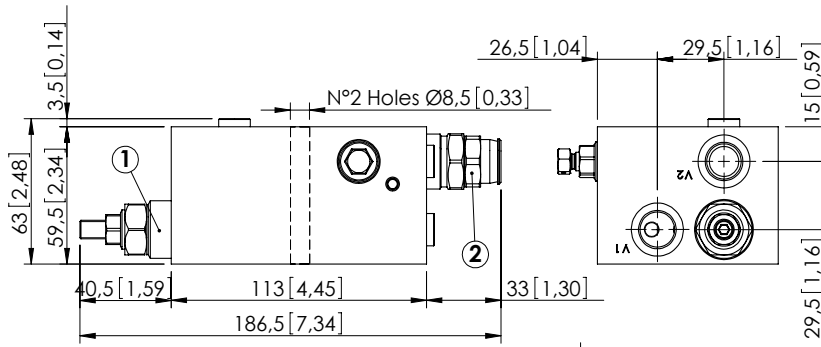
REGENERATIVE VALVES

Hydraulic scheme	Valve description	Valve type	Rated flow l/min (gpm)	Max. pressure bar (psi)	Installation	Main port size or cavity type	Page
	MRSN-060-ZBNV	Single overcentre with regenerative	60 (16)	350 (5000)	Flanged	G 3/8"	7.01.010
	MRSN-060-ZLNP	Single overcentre with regenerative	60 (16)	350 (5000)	In line	G 1/2"	7.02.020
	MRSN-150-ZLNV	Single overcentre with regenerative	150 (40)	350 (5000)	In line	G 1/2"	7.03.030
	MRDN-100-ZLNV	Double overcentre with regenerative	100 (26)	350 (5000)	In line	G 3/4"	7.04.040
	MRSN-300-ABNV	Single overcentre with regenerative	300 (79)	420 (6000)	Flanged	3/4" SAE 6000	7.05.050
	MRSN-300-ABNE	Single overcentre with double regenerative	300 (79)	420 (6000)	Flanged	1"-1/4 SAE 6000	7.06.060

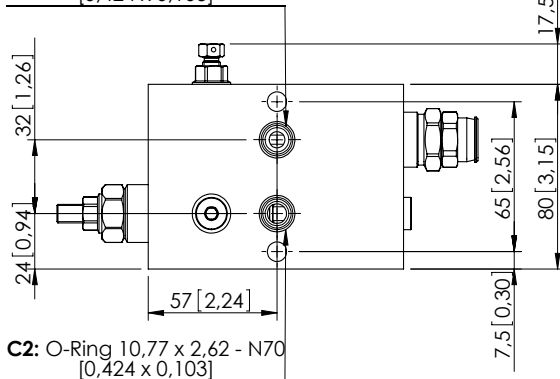
REGENERATIVE VALVE

MRSN-060-ZBNV

REGENERATIVE



C1: O-Ring 10,77 x 2,62 - N70
[0,424 x 0,103]



C2: O-Ring 10,77 x 2,62 - N70
[0,424 x 0,103]

Dimensions: mm [inches]

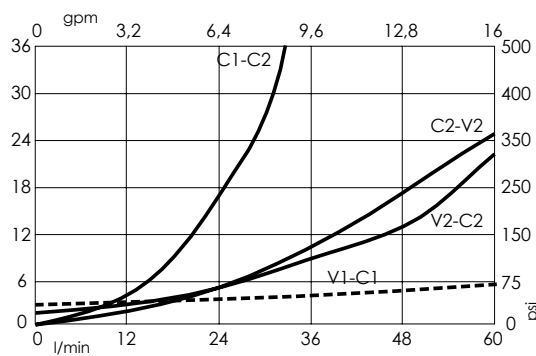
SPECIFICATIONS

Max. operating pressure:	350 bar (5000 psi)
Rated flow:	60 l/min (16 gpm)
Manifold:	Aluminium
Weight:	1,6 kg (3,53 lbs)
Contamination class to ISO 4406:	See technical spec.
MTTF _a :	150 - 1200 years: See technical spec.

NOTES

- Setting: at least 1.3 times the load induced pressure.
- Designed for aerial platforms.
- For other configurations/quick codes not available in this catalogue page please consult factory

CURVES



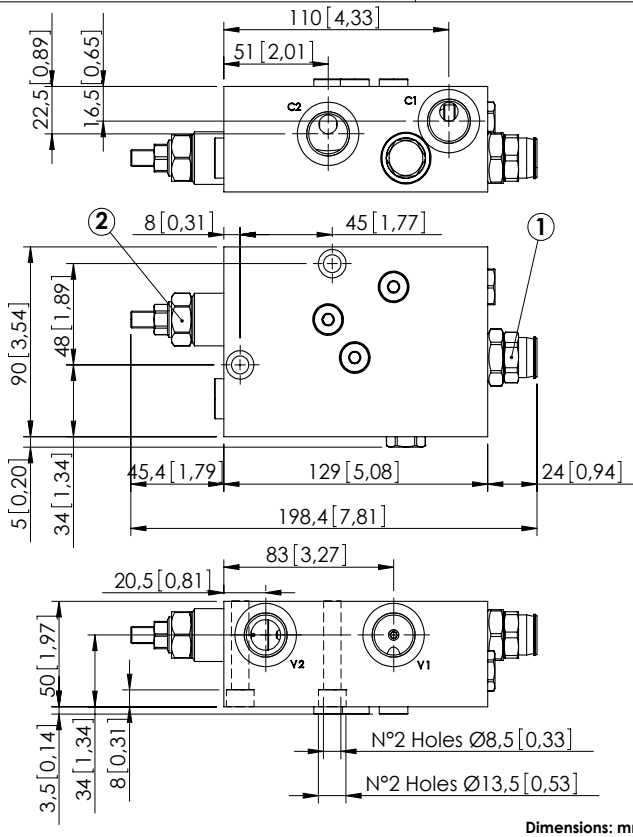
ORDERING CODES

Quick code	Description	Pilot ratio	Main ports size	Standard setting (Q=5 l/min)	Adjustment range	Pressure increase
MB000035	MRSN-060-ZBNV-11-G38-N350	11:1	V1,V2: G3/8" C1,C2: Ø 7	350 bar (5000 psi)	100-350 bar (1400-5000 psi)	69 bar/turn (1000 psi/turn)
MB000085	MRSN-060-ZBNV-04-G38-N350	4,2:1	V1,V2: G3/8" C1,C2: Ø 7	350 bar (5000 psi)	100-350 bar (1400-5000 psi)	139 bar/turn (2000 psi/turn)

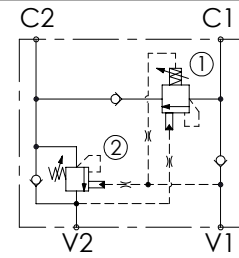
REGENERATIVE VALVE

MRSN-060-ZLNP

REGENERATIVE



Dimensions: mm [inches]



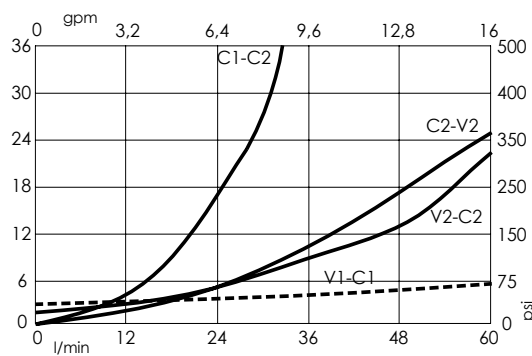
SPECIFICATIONS

Max. operating pressure:	350 bar (5000 psi)
Rated flow:	60 l/min (16 gpm)
Manifold:	Aluminium
Weight:	1,71 kg (3.77 lbs)
Contamination class to ISO 4406:	See technical spec.
MTF _d :	150 - 1200 years: See technical spec.

NOTES

Setting: at least 1.3 times the load induced pressure.
 For other configurations/quick codes not available in this catalogue page please consult factory

CURVES



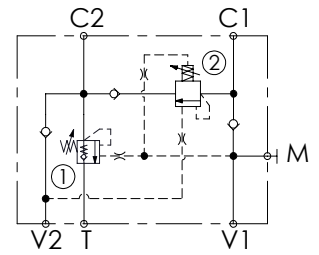
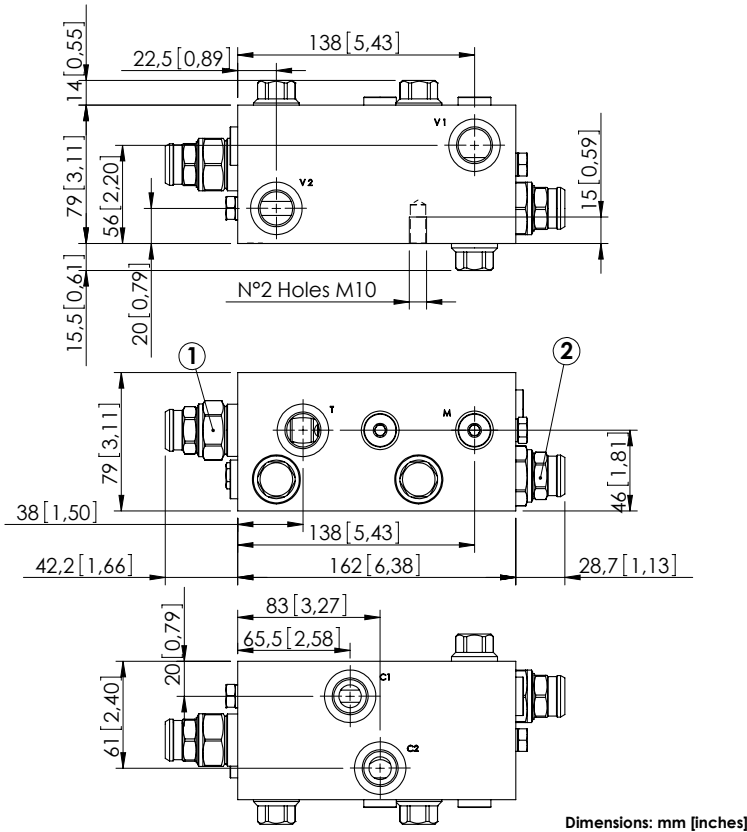
ORDERING CODES

Quick code	Description	Pilot ratio	Main ports size	Standard setting (Q=5 l/min)	Adjustment range	Pressure increase
MB000150	MRSN-060-ZLNP-04-G12-N350	4:1	V1,V2,C1,C2 : G 1/2"	① 350 bar (5080 psi) ② 170 bar (2500 psi)	① 100-350 bar (1450-5080 psi) ② 60-210 bar (850-3000 psi)	① 145 bar/turn (2100 psi/turn) ② 62 bar/turn (900 psi/turn)

REGENERATIVE VALVE

MRSN-150-ZLNV

REGENERATIVE



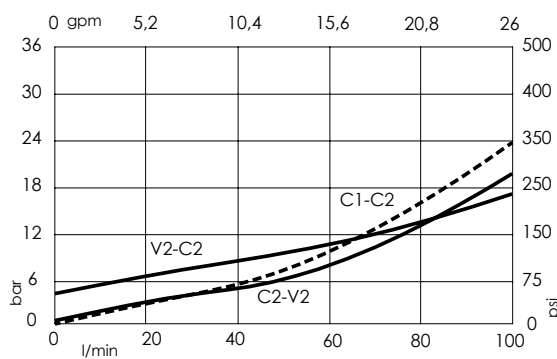
SPECIFICATIONS

Max. operating pressure:	350 bar (5000 psi)
Rated flow:	150 l/min (40 gpm)
Manifold:	Aluminium
Weight:	3,18 kg (7,01 lbs)
Contamination class to ISO 4406:	See technical spec.
MTF _a :	150 - 1200 years: See technical spec.

NOTES

Setting: at least 1.3 times the load induced pressure.
 Designed for truck mounted cranes.
 For other configurations/quick codes not available in this catalogue page please consult factory

CURVES



ORDERING CODES

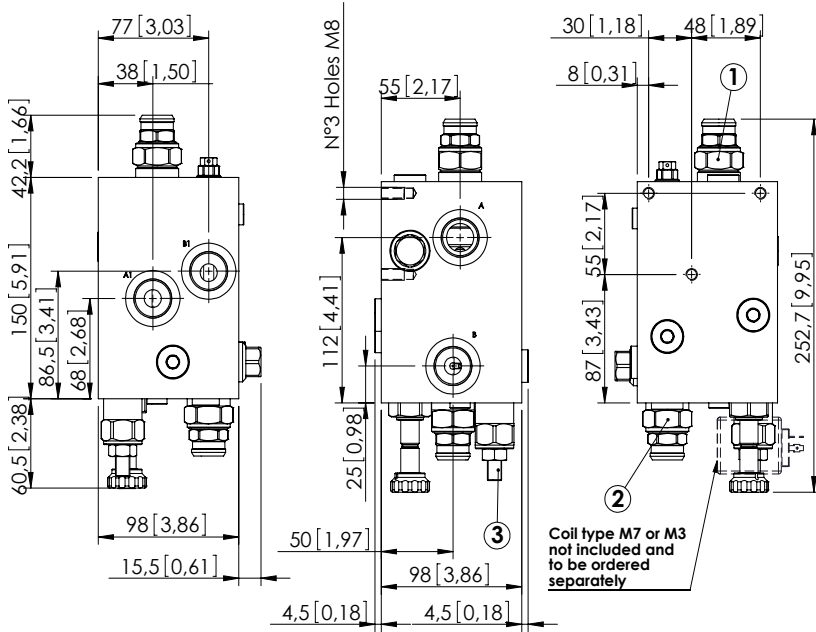
Quick code	Description	Pilot ratio	Main ports size	Standard setting Q=5 l/min (1,3 gpm)	Adjustment range	Pressure increase
MB000113	MRSN-150-ZLNV-04-G12-N350	4:1	V1, V2, C1, C2, T: G1/2" M: G1/4"	350 bar (5000 psi)	100-350 bar (1400-5000 psi)	104 bar/turn (1500 psi/turn)

Revision A1

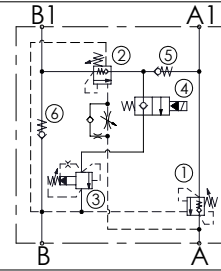
REGENERATIVE VALVE

MRDN-150-ZLNV

REGENERATIVE



Dimensions: mm [inches]



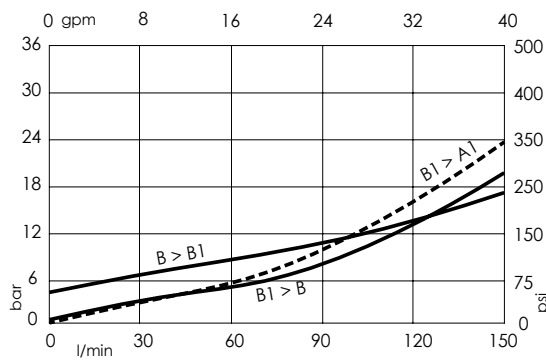
SPECIFICATIONS

Max. operating pressure:	350 bar (5000 psi)
Rated flow:	100 l/min (26 gpm)
Manifold:	Aluminium
Weight:	4,63 kg (10,21 lbs)
Contamination class to ISO 4406:	See technical spec.
MTF _d :	150 - 1200 years: See technical spec.

NOTES

- Setting: at least 1.3 times the load induced pressure.
- Designed for truck mounted cranes.
- See chapter 21.00.000 for coils.
- For other configurations/quick codes not available in this catalogue page please consult factory

CURVES



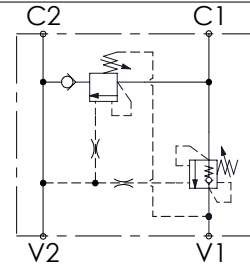
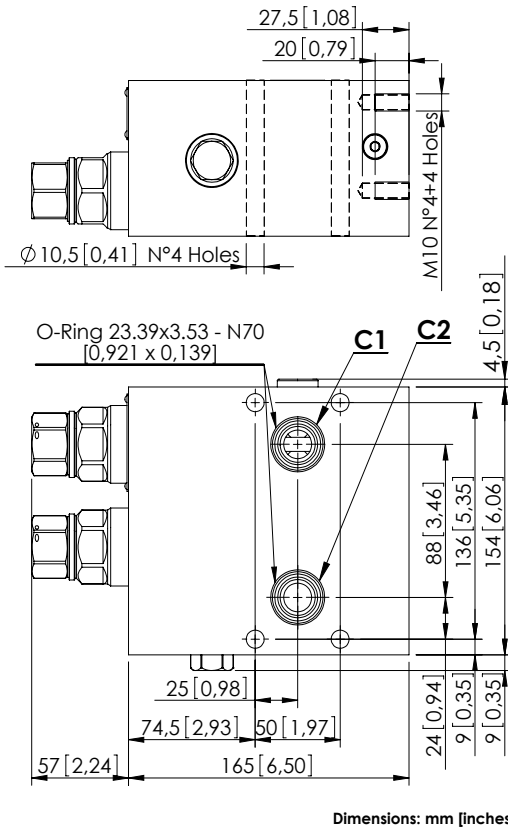
ORDERING CODES

Quick code	Description	Pilot ratio	Main ports size	Standard setting Q=5 l/min (1,3 gpm)	Adjustment range	Pressure increase
MB000476	MRDN-100-ZLNV-04-G34-N210	4:1	A,A1,B,B1 : G3/4"	① ② 350 bar (5000 psi) ③ 350 bar (5000 psi)	① ② 100-350 bar (1400-5000 psi) ③ 140-350 bar (2000-5000 psi)	① ② 103 bar/turn (1500 psi/turn) ③ 114 bar/turn (1700 psi/turn)

REGENERATIVE VALVE

MRSN-300-ABNV

REGENERATIVE



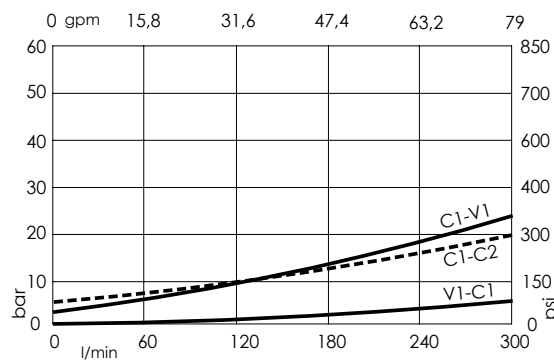
SPECIFICATIONS

Max. operating pressure:	420 bar (6000 psi)
Rated flow:	300 l/min (79 gpm)
Manifold:	Steel
Weight:	16,86 kg (37,17 lbs)
Contamination class to ISO 4406:	See technical spec.
MTF _d :	150 - 1200 years: See technical spec.

NOTES

- Setting: at least 1.3 times the load induced pressure.
- Designed for aerial platforms.
- For other configurations/quick codes not available in this catalogue page please consult factory

CURVES



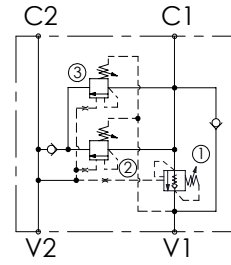
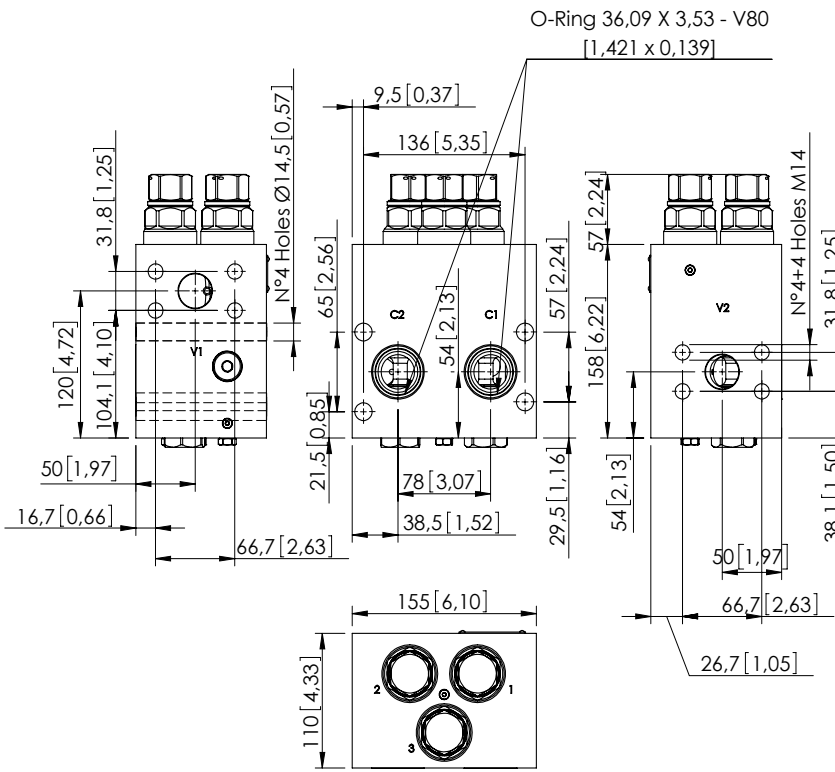
ORDERING CODES

Quick code	Description	Pilot ratio	Main ports size	Standard setting Q=5 l/min (1,3 gpm)	Adjustment range	Pressure increase
MB000816	MRSN-300-ABNV-06-S34-N420	6:1	V1,V2: 3/4" SAE 6000 C1,C2: $\varnothing 16,5$	250 bar (3600 psi)	120-360 bar (1700-3600 psi)	122 bar/turn (1800 psi/turn)

REGENERATIVE VALVE

MRSN-300-ABNE

REGENERATIVE



SPECIFICATIONS

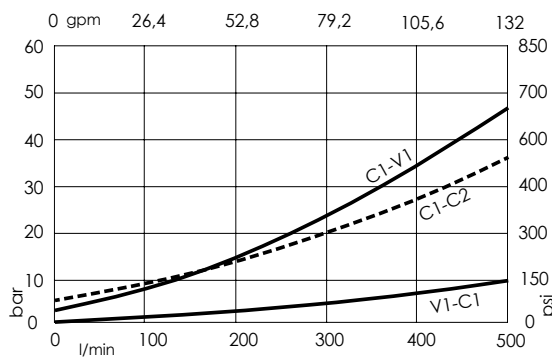
Max. operating pressure:	420 bar (6000 psi)
Rated flow:	300 l/min (79 gpm)
Manifold:	Steel
Weight:	18,89 kg (41,49 lbs)
Contamination class to ISO 4406:	See technical spec.
MTF _a :	150 - 1200 years: See technical spec.

Dimensions: mm [inches]

NOTES

Valve for heavy duty working cycles with viton seals and reinforced plugs.
 Designed for crusher scissors.
 For other configurations/quick codes not available in this catalogue page please consult factory

CURVES



ORDERING CODES

Quick code	Description	Pilot ratio	Main ports size	Standard setting Q=5 l/min (1,3 gpm)	Adjustment range	Pressure increase
MB000132	MRSN-300-ABNE-06-S11-V420	6:1	V1,V2 : 1-1/4 SAE 6000 C1,C2 : Ø 28	250 bar (3600 psi)	120-360 bar (1700-5200 psi)	104 bar/turn (1500 psi/turn)

Revision C1