

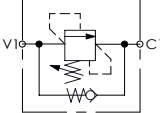
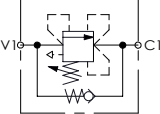
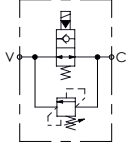


ATLANTIC
Fluid Tech

**SECTION
3**

Sequence
Valves

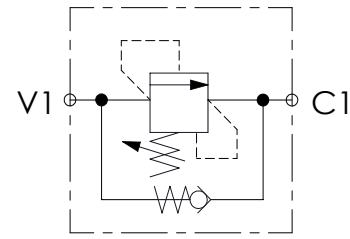
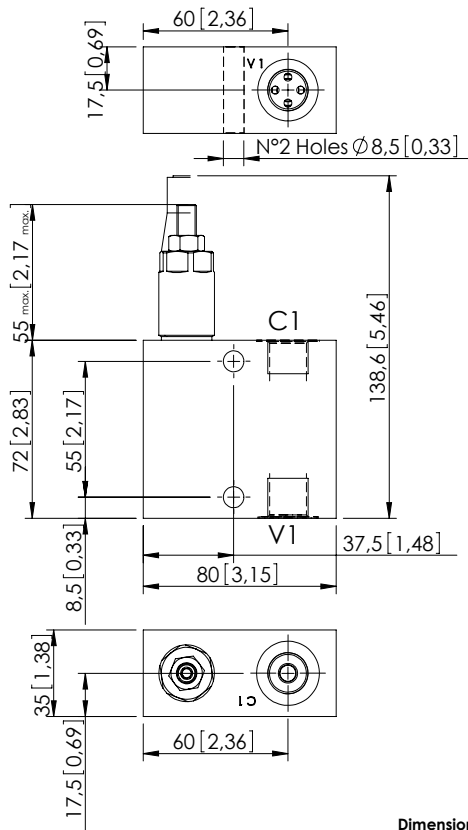
SEQUENCE VALVES

Hydraulic scheme	Valve description	Valve type	Rated flow l/min (gpm)	Max. pressure bar (psi)	Installation	Main port size or cavity type	Page
	KPSN-030-DPNA	Direct acting, stabilized piston, not compensated	30 (8)	350 (5000)	In line	G3/8"	3.01.010
	KPSN-030-DPNA	Direct acting, stabilized piston, not compensated	30 (8)	350 (5000)	In line	G1/2"	3.01.020
	KPST-030-DPNA	Direct acting, stabilized piston, compensated	30 (8)	350 (5000)	In line	G3/8"	3.02.030
	KPST-030-DPNA	Direct acting, stabilized piston, compensated	30 (8)	350 (5000)	In line	G1/2"	3.02.040
	KPEN-020-DPLD	Direct acting, solenoid by-pass	20 (5)	350 (5000)	In line	G1/4"	3.03.050

SEQUENCE VALVE IN BODY

KPSN-030-DPNA

DIRECT ACTING
STABILIZED PISTON
NOT COMPENSATED



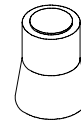
SPECIFICATIONS

Max. operating pressure:	350 bar (5000 psi)
Rated flow:	30 l/min (8 gpm)
Manifold:	Aluminium
Weight:	0.63 kg (1.43 lbs)
Contamination class to ISO 4406:	See technical spec.
MTTF _d :	150 - 1200 years: See technical spec.

NOTES

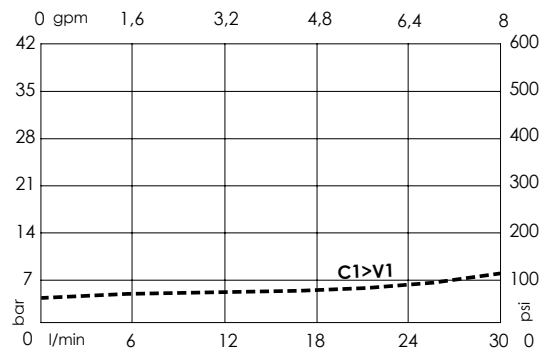
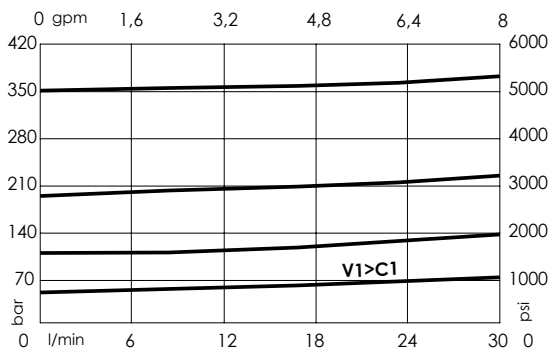
For other configurations/quick codes not available in this catalogue page please consult factory

SEALING CAP



Ordering code:
AT000020

CURVES



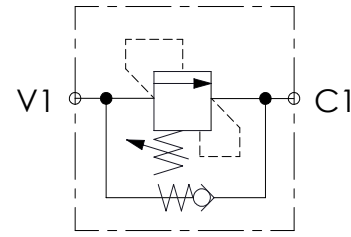
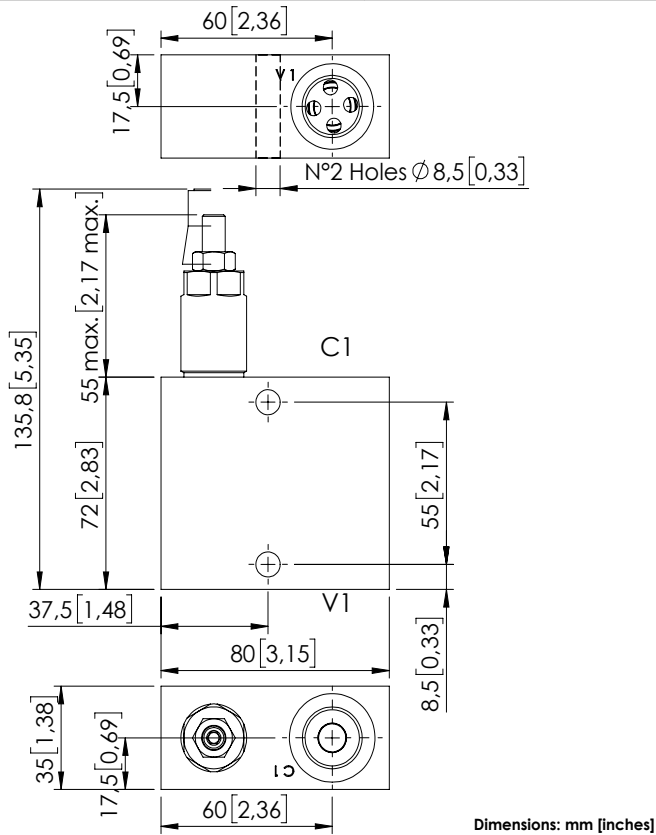
ORDERING CODES

Quick code	Description	Main ports size	Standard setting Q=5 l/min (1.3 gpm)	Adjustment range	Pressure increase
KP000036	KPSN-030-DPNA-HN-G38-N350	C1, V1: G 3/8"	350 bar (5000 psi)	100-350 bar (1400-5000 psi)	91 bar/turn (1300 psi/turn)
KP000033	KPSN-030-DPNA-HN-G38-N200	C1, V1: G 3/8"	200 bar (2900 psi)	50-210 bar (700-3000 psi)	42 bar/turn (600 psi/turn)
KP000035	KPSN-030-DPNA-HN-G38-N100	C1, V1: G 3/8"	100 bar (1400 psi)	30-100 bar (450-1400 psi)	20 bar/turn (300 psi/turn)
KP000034	KPSN-030-DPNA-HN-G38-N050	C1, V1: G 3/8"	50 bar (700 psi)	10-50 bar (150-700 psi)	10 bar/turn (150 psi/turn)

SEQUENCE VALVE IN BODY

KPSN-030-DPNA

DIRECT ACTING
STABILIZED PISTON
NOT COMPENSATED



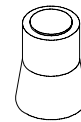
SPECIFICATIONS

Max. operating pressure:	350 bar (5000 psi)
Rated flow:	30 l/min (450 gpm)
Manifold:	Aluminium
Weight:	0.64 kg (1.41lbs)
Contamination class to ISO 4406:	See technical spec.
MTTF:	150 - 1200 years: See technical spec.

NOTES

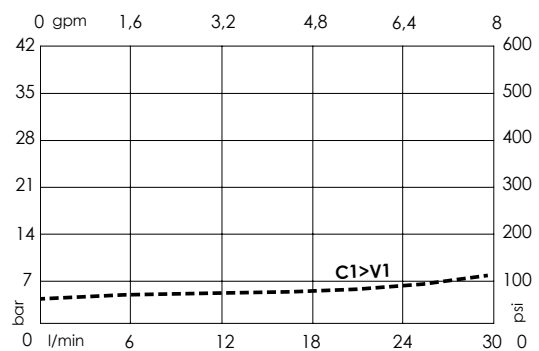
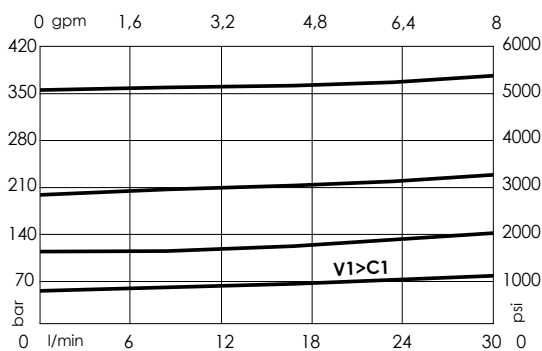
For other configurations/quick codes not available in this catalogue page please consult factory

SEALING CAP



Ordering code:
AT000020

CURVES



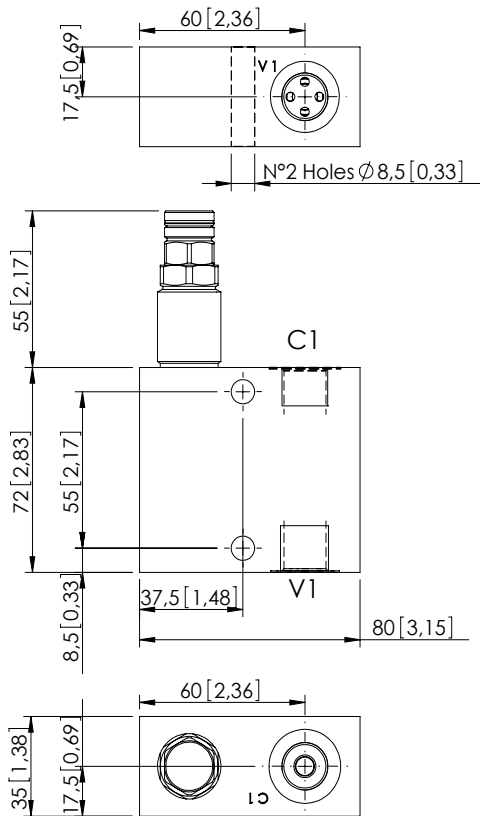
ORDERING CODES

Quick code	Description	Main ports size	Standard setting Q=5 l/min (1.3 gpm)	Adjustment range	Pressure increase
KP000061	KPSN-030-DPNA-HN-G12-N350	C1, V1: G 1/2"	350 bar (5000 psi)	100-350 bar (1400-5000 psi)	91 bar/turn (1300 psi/turn)
KP000062	KPSN-030-DPNA-HN-G12-N200	C1, V1: G 1/2"	200 bar (2900 psi)	50-210 bar (700-3000 psi)	42 bar/turn (600 psi/turn)
KP000060	KPSN-030-DPNA-HN-G12-N100	C1, V1: G 1/2"	100 bar (1400 psi)	30-100 bar (450-1400 psi)	20 bar/turn (300 psi/turn)
KP000063	KPSN-030-DPNA-HN-G12-N050	C1, V1: G 1/2"	50 bar (700 psi)	10-50 bar (150-700 psi)	10 bar/turn (150 psi/turn)

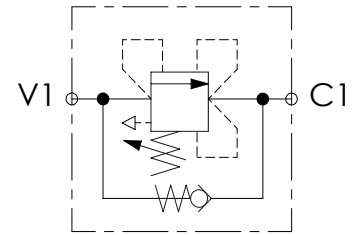
SEQUENCE VALVE IN BODY

KPST-030-DPNA

DIRECT ACTING
STABILIZED PISTON
COMPENSATED



Dimensions: mm [inches]



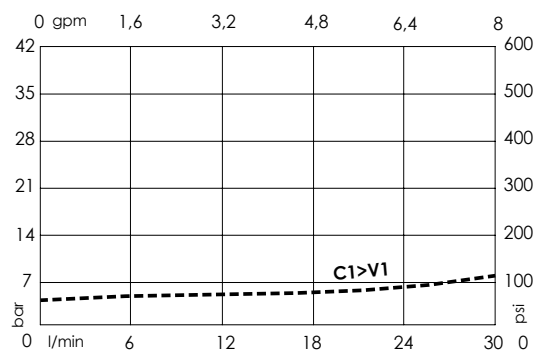
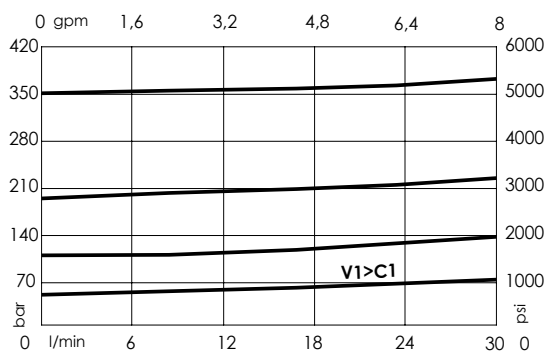
SPECIFICATIONS

Max. operating pressure:	350 bar (5000 psi)
Rated flow:	30 l/min (8 gpm)
Manifold:	Aluminium
Weight:	0.66 kg (1,48 lbs)
Contamination class to ISO 4406:	See technical spec.
MTF _d :	150 - 1200 years: See technical spec.

NOTES

For other configurations/quick codes not available in this catalogue page please consult factory

CURVES



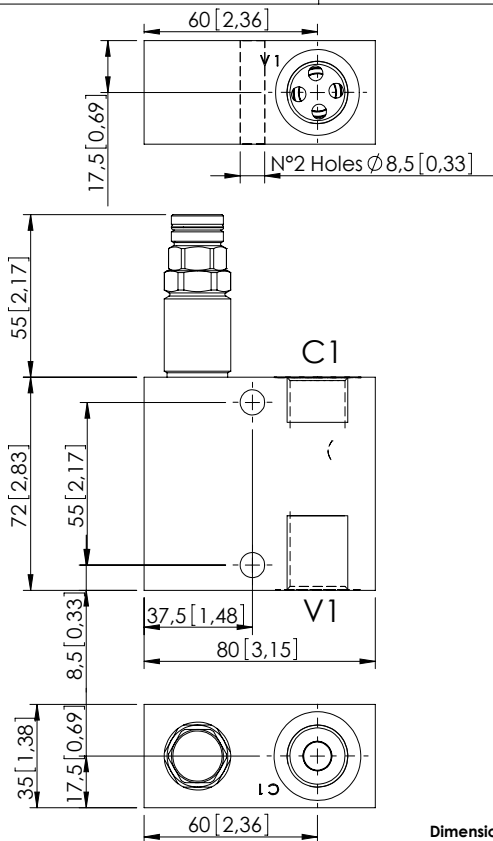
ORDERING CODES

Quick code	Description	Main ports size	Standard setting Q=5 l/min (1,3 gpm)	Adjustment range	Pressure increase
KP000079	KPST-030-DPNA-HN-G38-N350	C1, V1: G 3/8"	350 bar (5000 psi)	100-350 bar (1400-5000 psi)	91 bar/turn (1300 psi/turn)
KP000080	KPST-030-DPNA-HN-G38-N200	C1, V1: G 3/8"	200 bar (2900 psi)	50-210 bar (700-3000 psi)	42 bar/turn (600 psi/turn)
KP000081	KPST-030-DPNA-HN-G38-N100	C1, V1: G 3/8"	100 bar (1400 psi)	30-100 bar (450-1400 psi)	20 bar/turn (300 psi/turn)
KP000082	KPST-030-DPNA-HN-G38-N050	C1, V1: G 3/8"	50 bar (700 psi)	10-50 bar (150-700 psi)	10 bar/turn (150 psi/turn)

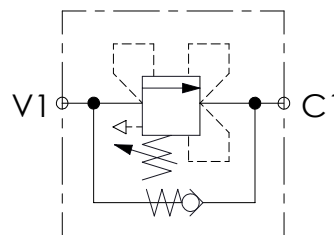
SEQUENCE VALVE IN BODY

KPST-030-DPNA

DIRECT ACTING
STABILIZED PISTON
COMPENSATED



Dimensions: mm [inches]



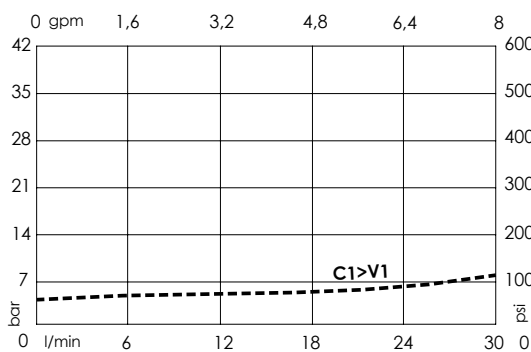
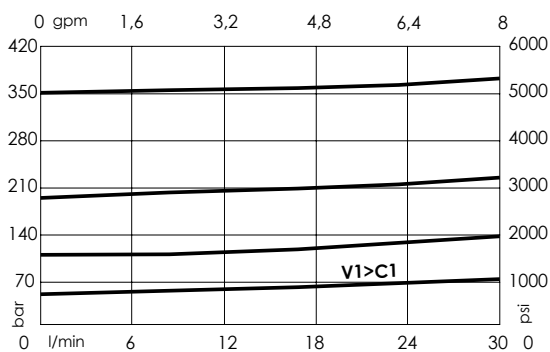
SPECIFICATIONS

Max. operating pressure:	350 bar (5000 psi)
Rated flow:	30 l/min (8 gpm)
Manifold:	Aluminium
Weight:	0,67 kg (1,48 lbs)
Contamination class to ISO 4406:	See technical spec.
MTF _a :	150 - 1200 years: See technical spec.

NOTES

For other configurations/quick codes not available in this catalogue page please consult factory

CURVES



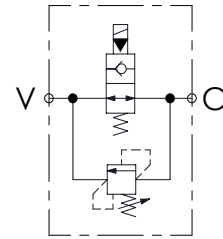
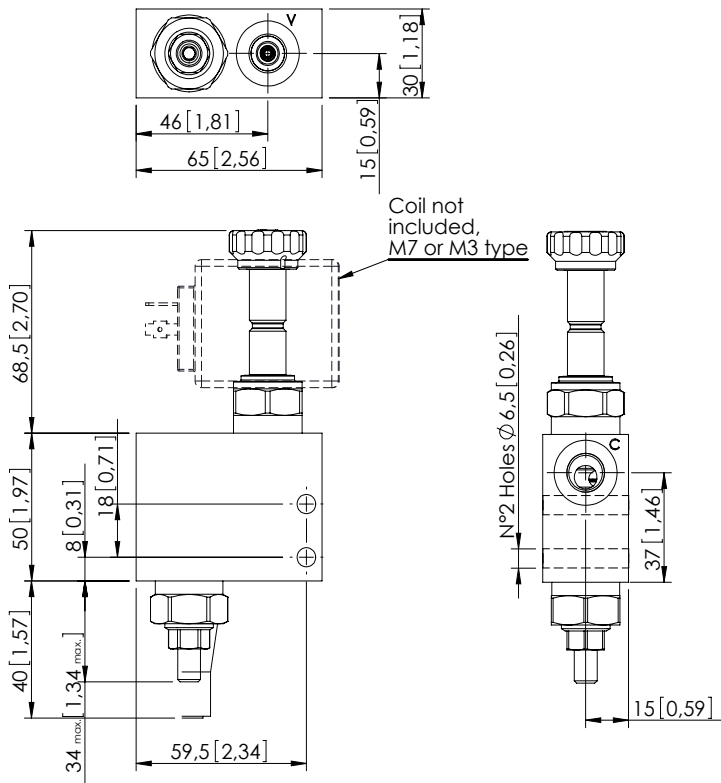
ORDERING CODES

Quick code	Description	Main ports size	Standard setting Q=5 l/min (1,3 gpm)	Adjustment range	Pressure increase
KP000083	KPST-030-DPNA-HN-G12-N350	C1,V1 : G 1/2"	350 bar (5000 psi)	100-350 bar (1400-5000 psi)	91 bar/turn (1300 psi/turn)
KP000084	KPST-030-DPNA-HN-G12-N200	C1,V1 : G 1/2"	200 bar (2900 psi)	50-210 bar (700-3000 psi)	42 bar/turn (600 psi/turn)
KP000085	KPST-030-DPNA-HN-G12-N100	C1,V1 : G 1/2"	100 bar (1400 psi)	30-100 bar (450-1400 psi)	20 bar/turn (300 psi/turn)
KP000086	KPST-030-DPNA-HN-G12-N050	C1,V1 : G 1/2"	50 bar (700 psi)	10-50 bar (150-700 psi)	10 bar/turn (150 psi/turn)

SEQUENCE VALVE IN BODY

KPEN-020-DPLD

DIRECT ACTING
SOLENOID BY-PASS



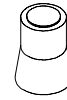
SPECIFICATIONS

Max. operating pressure:	350 bar (5000 psi)
Rated flow:	20 l/min (5 gpm)
Manifold:	Steel
Weight:	0,84 kg (1,83 lbs)
Contamination class to ISO 4406:	See technical spec.
MTF _d :	150 - 1200 years: See technical spec.

NOTES

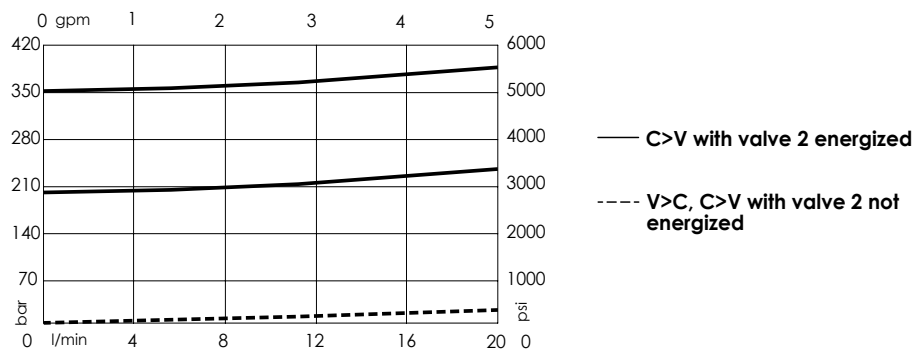
For other configurations/quick codes not available in this catalogue page please consult factory

SEALING CAP



Ordering code:
AT000020

CURVES



ORDERING CODES

Quick code	Description	Main ports size	Standard setting Q=5 l/min (1,3 gpm)	Adjustment range	Pressure increase
KP000109	KPEN-020-DPLD-SN-G14-N350	C,P: G 1/4"	350 bar (5000 psi)	175-350 bar (2500-5000 psi)	177 bar/turn (2600 psi/turn)
KP000110	KPEN-020-DPLD-SN-G14-N210	C,P: G 1/4"	200 bar (2900 psi)	105-210 bar (1500-3000 psi)	80 bar/turn (1100 psi/turn)