

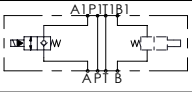
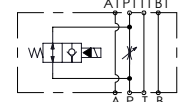
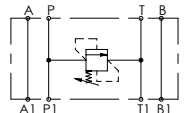
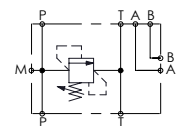
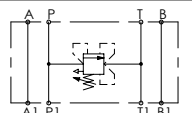
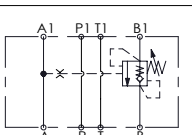
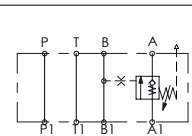
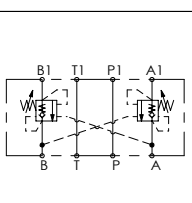
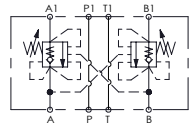
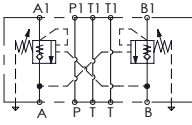


ATLANTIC
Fluid Tech

**SECTION
18**

Modular
Valves for
Cetop

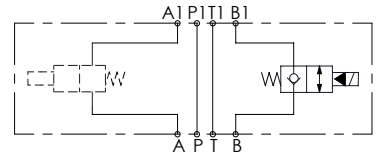
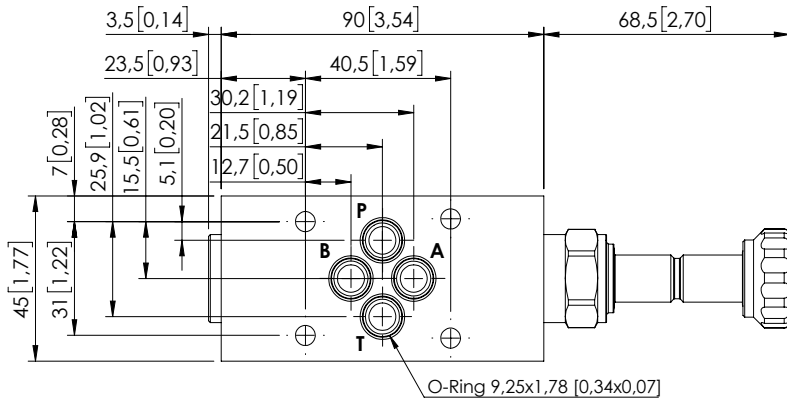
MODULAR VALVES FOR CETOP

Hydraulic scheme	Valve description	Valve type	Rated flow l/min (gpm)	Max. pressure bar (psi)	Installation	Main port size or cavity type	Page
	BDEN-040-LCEI-L	Left version	40 (11)	210 (3000)	Flanged	Cetop 3	18.01.010
	BDEN-040-LCEI-R	Right version	40 (11)	210 (3000)	Flanged	Cetop 3	18.01.010
	BFEN-040-LCOI	Pilot operated, cetop 3	40 (11)	210 (3000)	Flanged	Cetop 3	18.02.020
	KPLN-030-DPNA	Direct acting, cetop 3	30 (8)	210 (3000)	Flanged	Cetop 3	18.03.030
	KPLN-030-DPNA	Direct acting, poppet type, subplate cetop 3	30 (8)	350 (5000)	Flanged	Cetop 3	18.04.040
	KPLN-080-DPNA	Direct acting, poppet type, subplate cetop 5	80 (21)	350 (5000)	Flanged	Cetop 5	18.04.050
	KPLT-030-DPNA	Direct acting, compensated	30 (8)	210 (3000)	Flanged	Cetop 3	18.05.060
	MBSN-060-ZTNR	Single acting, cetop 3	60 (16)	250 (3600)	Flanged	Cetop 3	18.06.070
	MBSN-060-ATNR	Single acting, cetop 3	60 (16)	350 (5000)	Flanged	Cetop 3	18.06.080
	MBST-100-ZTNP	Single acting, cetop 5	100 (26)	250 (3600)	Flanged	Cetop 5	18.07.090
	MBDN-030-LTNR	Double acting, cetop 3	30 (8)	210 (3000)	Flanged	Cetop 3	18.08.100
	MBDN-060-ZTNR	Double acting, cetop 3	60 (16)	350 (5000)	Flanged	Cetop 3	18.08.110
	MBDN-060-ATNR	Double acting, cetop 3	60 (16)	350 (5000)	Flanged	Cetop 3	18.08.120
	MBDN-100-ZTNR	Double acting, cetop 5	100 (26)	350 (5000)	Flanged	Cetop 5	18.08.130
	MBDP-060-ZTNR	Double acting, cetop 3	60 (16)	350 (5000)	Flanged	Cetop 3	18.10.140
	MBDT-100-ATNR	Double acting, cetop 5	100 (26)	350 (5000)	Flanged	Cetop 5	18.09.150

MODULAR VALVE FOR CETOP

BDEN-040-LCEI

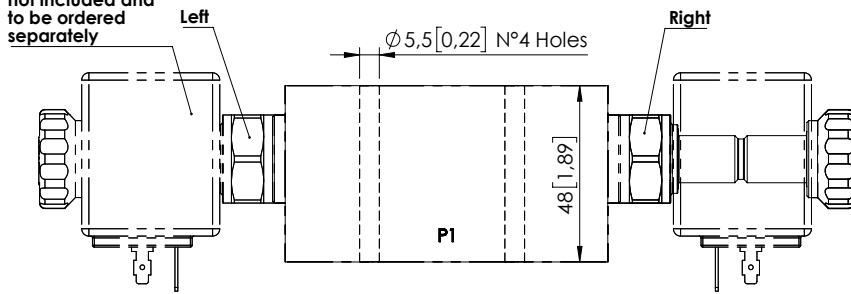
CETOP 3



SPECIFICATIONS

Max. operating pressure:	210 bar (3000 psi)
Rated flow:	40 l/min (11 gpm)
Weight:	0.62 kg (1.34 lbs)
Manifold:	Aluminium
Coil type:	M7 or M3 type
Contamination class to ISO 4406:	See technical spec.
MTF _d :	150 - 1200 years: See technical spec.

Coil type M7 or M3 not included and to be ordered separately

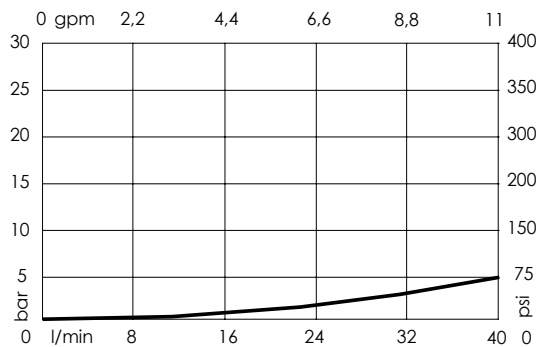


Dimensions: mm [inches]

NOTES

For other configurations/quick codes not available in this catalogue page please consult factory

CURVES



ORDERING CODES

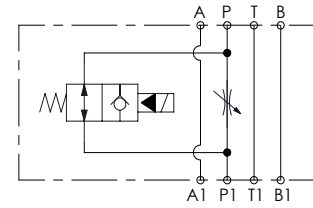
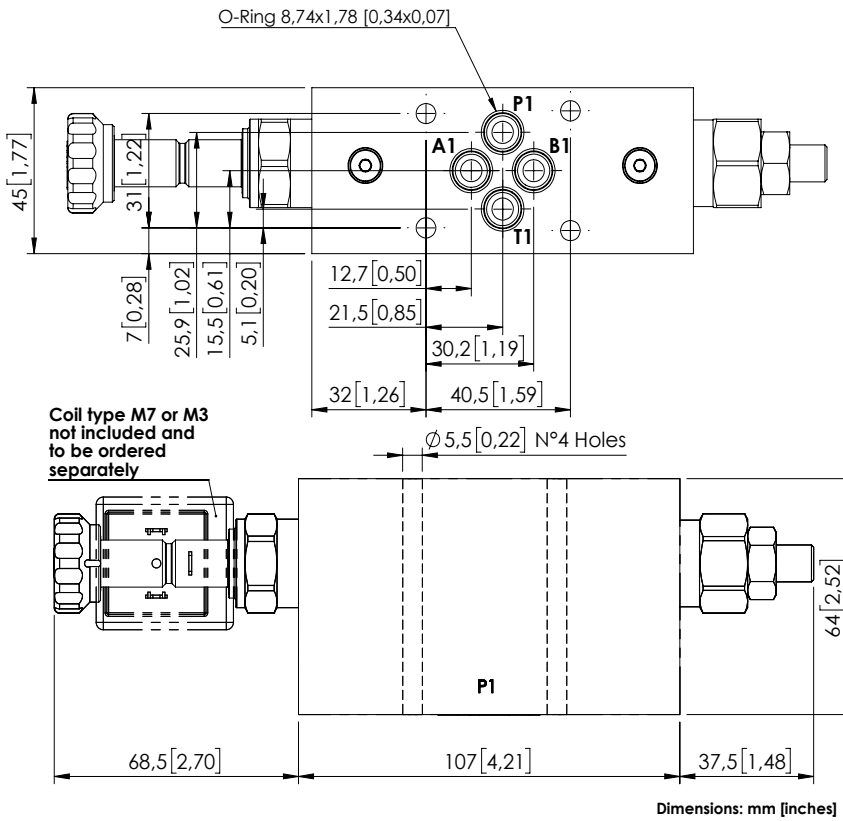
Quick code	Description	Ports	Version
BD000034	BDEN-040-LCEI-NP-N06-N210-R	A,B,P,T: CETOP 3	Right
BD000119	BDEN-040-LCEI-NP-N06-N210-L	A,B,P,T: CETOP 3	Left

Revision B

MODULAR VALVE FOR CETOP

BFEN-040-LCOI

CETOP 3



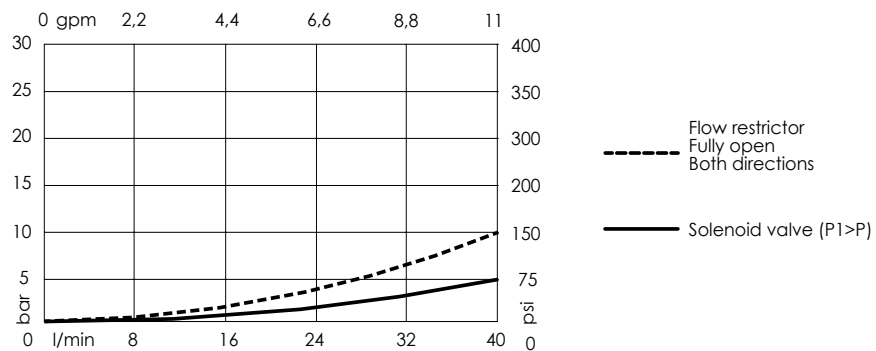
SPECIFICATIONS

Max. operating pressure:	210 bar (3000 psi)
Rated flow:	40 l/min (11 gpm)
Weight:	1 kg (2,2 lbs)
Manifold:	Aluminium
Coil type:	M7 or M3 type
Contamination class to ISO 4406:	See technical spec.
MTF _a :	150 - 1200 years: See technical spec.

NOTES

For other configurations/quick codes not available in this catalogue page please consult factory

CURVES



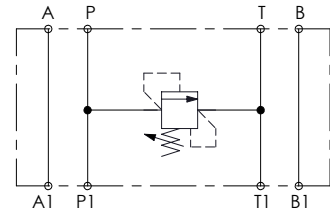
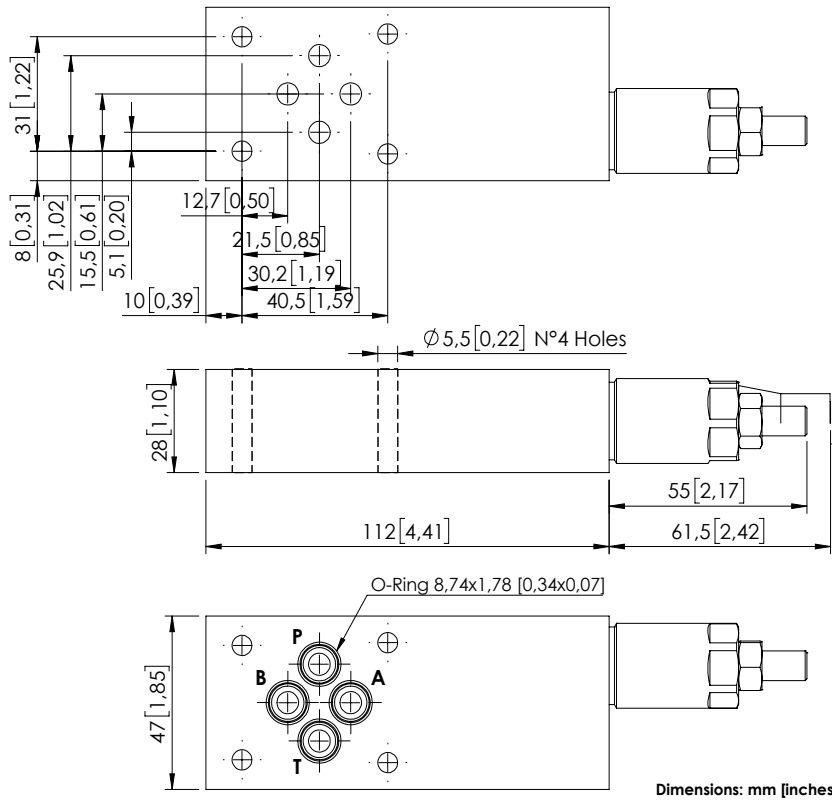
ORDERING CODES

Quick code	Description	Ports
BF000004	BFEN-040-LCOI-NP-N06-N210	A,B,P,T: CETOP 3

MODULAR VALVE FOR CETOP

KPLN-030-DPNA

CETOP 3



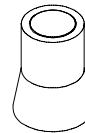
SPECIFICATIONS

Max. operating pressure:	210 bar (3000 psi)
Rated flow:	30 l/min (8 gpm)
Manifold:	Aluminium
Weight:	0,51 kg (1,14 lbs)
Contamination class to ISO 4406:	See technical spec.
MTF _d :	150 - 1200 years: See technical spec.

NOTES

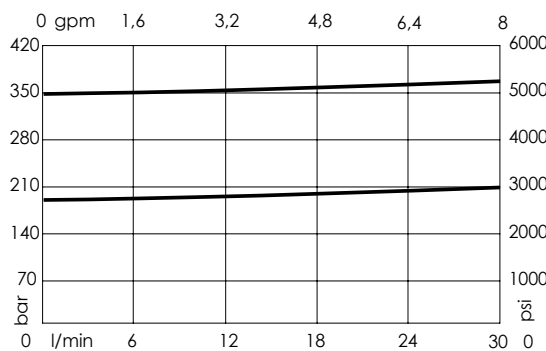
For other configurations/quick codes not available in this catalogue page please consult factory

SEALING CAP



Ordering code:
AT000020

CURVES



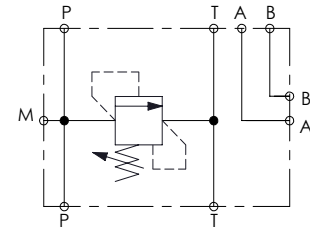
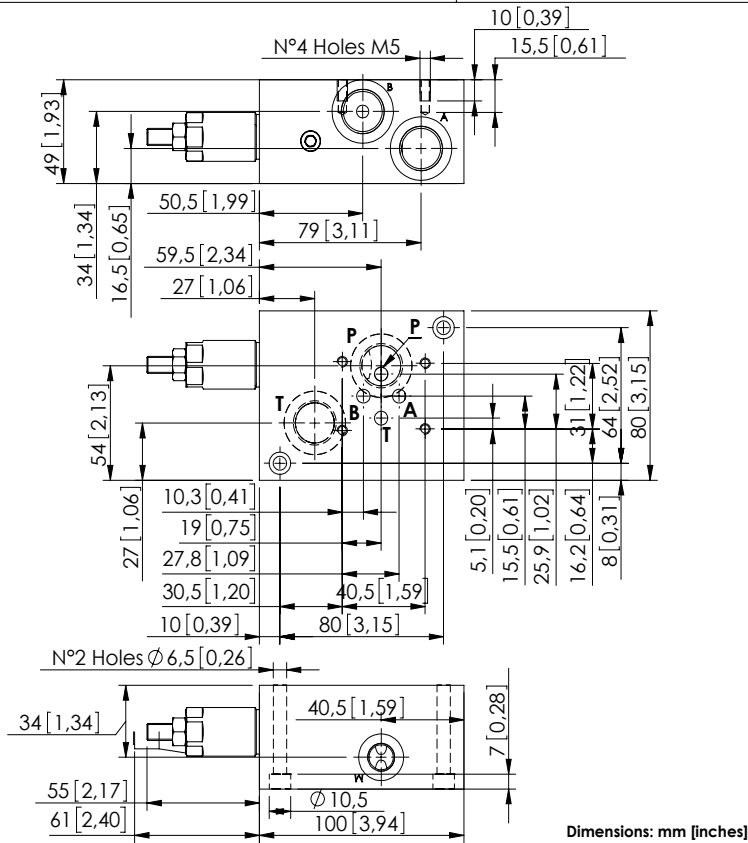
ORDERING CODES

Quick code	Description	Ports	Standard setting Q=5 l/min (1,3 gpm)	Adjustment range	Pressure increase
KP000170	KPLN-030-DPNA-HN-N06-N210	A,B,P,T: CETOP 3	350 bar (5000 psi)	100-350 bar (1400-5000 psi)	91 bar/turn (1300 psi/turn)
KP000112	KPLN-030-DPNA-HN-N06-N200	A,B,P,T: CETOP 3	200 bar (2800 psi)	50-210 bar (700-3000 psi)	42 bar/turn (600 psi/turn)

MODULAR VALVE FOR CETOP

KPLN-030-DPNA

CETOP 3
SUBPLATE



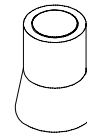
SPECIFICATIONS

Max. operating pressure:	350 bar (5000 psi)
Rated flow:	30 l/min (8 gpm)
Manifold:	Aluminium
Weight:	1,04 kg (2.2 lbs)
Contamination class to ISO 4406:	See technical spec.
MTTFd:	150 - 1200 years: See technical spec.

NOTES

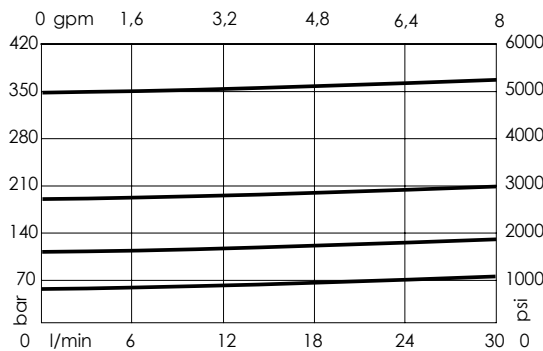
For other configurations/quick codes not available in this catalogue page please consult factory

SEALING CAP



Ordering code:
AT000020

CURVES



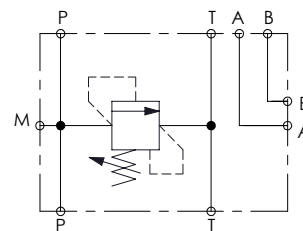
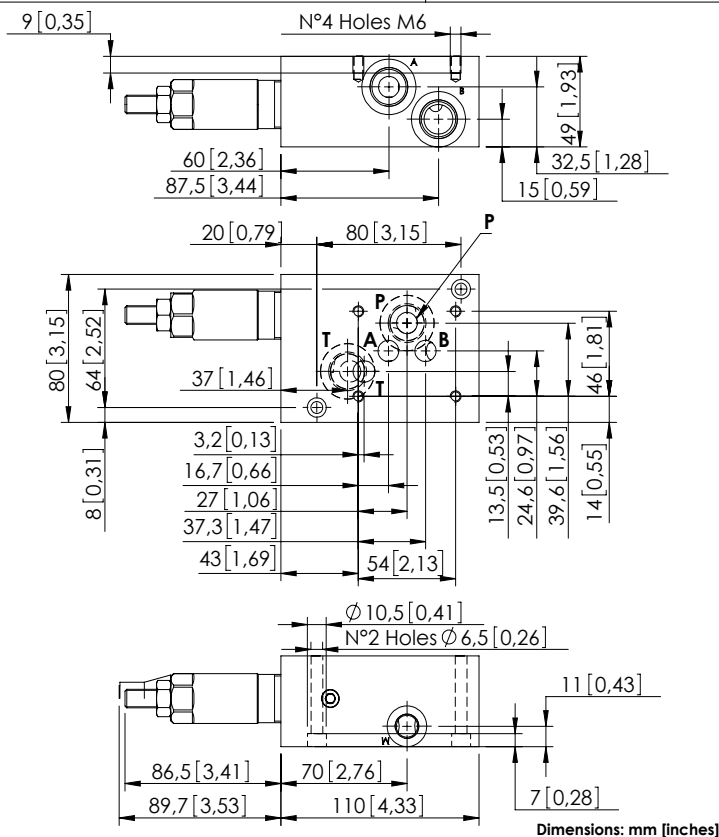
ORDERING CODES

Quick code	Description	Ports	Standard setting Q=5 l/min (1.3 gpm)	Adjustment range	Pressure increase
KP000071	KPLN-030-DPNA-HN-N06-N350	A,B,P,T: CETOP 3 A,B,P,T: G 1/2", M: G 1/4"	350 bar (5000 psi)	100-350 bar (1400-5000 psi)	91 bar/turn (1300 psi/turn)
KP000072	KPLN-030-DPNA-HN-N06-N200	A,B,P,T: CETOP 3 A,B,P,T: G 1/2", M: G 1/4"	200 bar (2800 psi)	50-210 bar (700-3000 psi)	42 bar/turn (600 psi/turn)
KP000073	KPLN-030-DPNA-HN-N06-N100	A,B,P,T: CETOP 3 A,B,P,T: G 1/2", M: G 1/4"	100 bar (1400 psi)	30-100 bar (450-1400 psi)	20 bar/turn (300 psi/turn)
KP000074	KPLN-030-DPNA-HN-N06-N050	A,B,P,T: CETOP 3 A,B,P,T: G 1/2", M: G 1/4"	50 bar (700 psi)	10-50 bar (150-700 psi)	10 bar/turn (150 psi/turn)

MODULAR VALVE FOR CETOP

KPLN-080-DPNA

CETOP 5
SUBPLATE



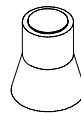
SPECIFICATIONS

Max. operating pressure:	350 bar (3000 psi)
Rated flow:	80 l/min (21 gpm)
Manifold:	Aluminium
Weight:	1,26 kg (2,77 lbs)
Contamination class to ISO 4406:	See technical spec.
MTF _d :	150 - 1200 years: See technical spec.

NOTES

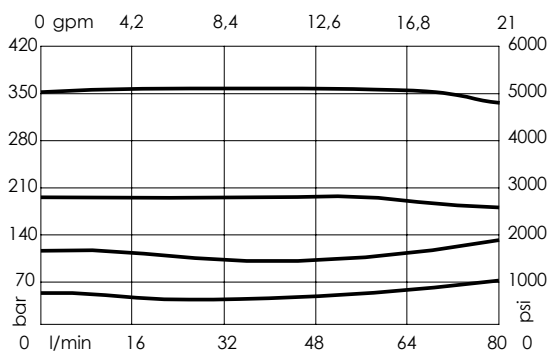
For other configurations/quick codes not available in this catalogue page please consult factory

SEALING CAP



Ordering code:
AT000021

CURVES



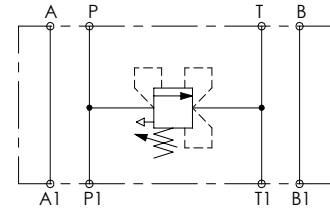
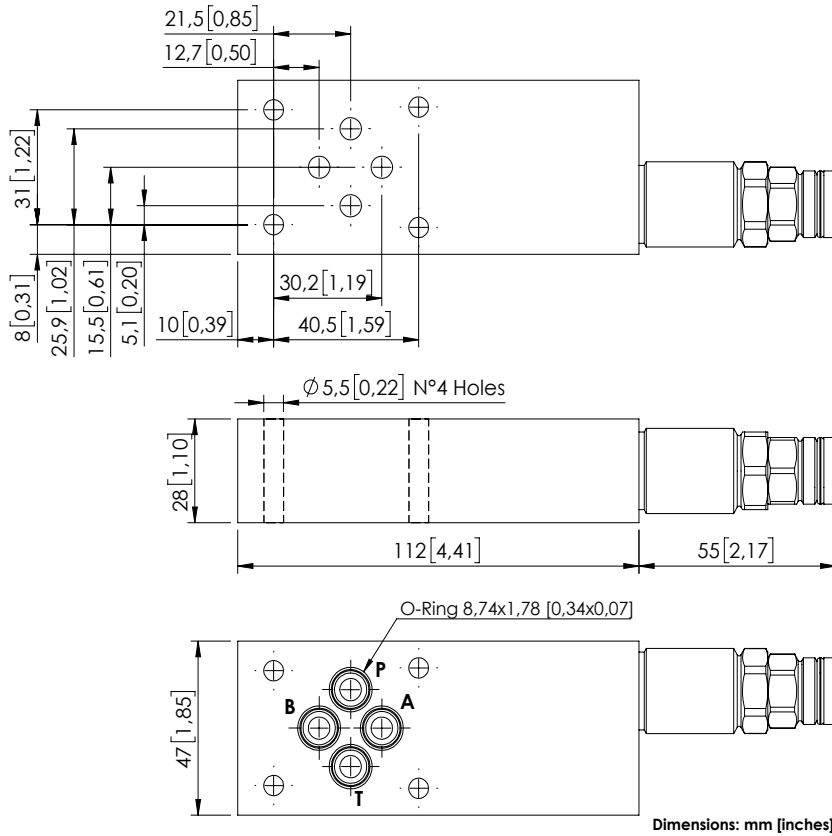
ORDERING CODES

Quick code	Description	Ports	Standard setting Q=5 l/min (1,3 gpm)	Adjustment range	Pressure increase
KP000075	KPLN-080-DPNA-HN-N10-N350	A,B,P,T : CETOP 5 A,B,P,T : G 1/2" ; M: G 1/4"	350 bar (5000 psi)	100-350 bar (1400-5000 psi)	42 bar/turn (600 psi/turn)
KP000076	KPLN-080-DPNA-HN-N10-N200	A,B,P,T : CETOP 5 A,B,P,T : G 1/2" ; M: G 1/4"	200 bar (2800 psi)	60-210 bar (850-3000 psi)	24 bar/turn (350 psi/turn)
KP000077	KPLN-080-DPNA-HN-N10-N100	A,B,P,T : CETOP 5 A,B,P,T : G 1/2" ; M: G 1/4"	100 bar (1400 psi)	25-100 bar (350-1400 psi)	13 bar/turn (200 psi/turn)
KP000102	KPLN-080-DPNA-HN-N10-N050	A,B,P,T : CETOP 5 A,B,P,T : G 1/2" ; M: G 1/4"	50 bar (700 psi)	5-50 bar (100-700 psi)	9 bar/turn (150 psi/turn)

MODULAR VALVE FOR CETOP

KPLT-030-DPNA

CETOP 3



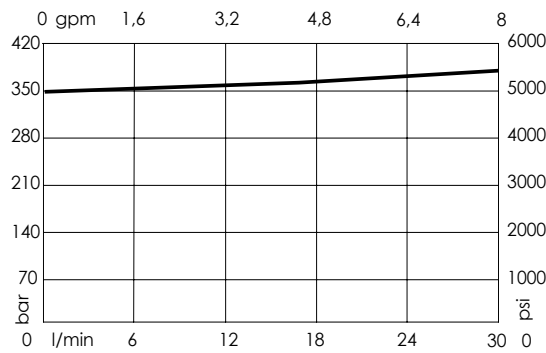
SPECIFICATIONS

Max. operating pressure:	210 bar (3000 psi)
Rated flow:	30 l/min (8 gpm)
Manifold:	Aluminium
Weight:	0,54 kg (1,2 lbs)
Contamination class to ISO 4406:	See technical spec.
MTTF _d :	150 - 1200 years: See technical spec.

NOTES

For other configurations/quick codes not available in this catalogue page please consult factory

CURVES



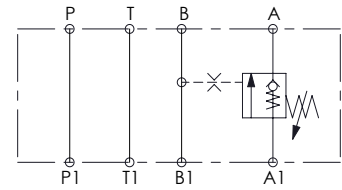
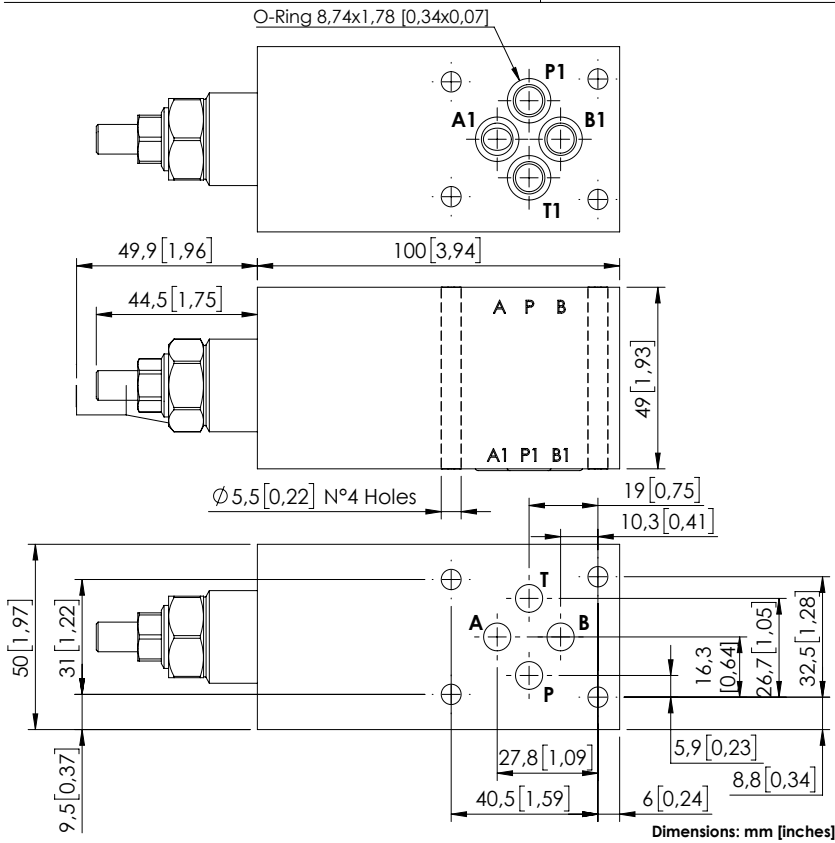
ORDERING CODES

Quick code	Description	Ports	Standard setting Q=5 l/min (1,3 gpm)	Adjustment range	Pressure increase
KP000171	KPLT-030-DPNA-HN-N06-N350	A,B,P,T: CETOP 3	350 bar (5000 psi)	100-350 bar (1400-5000 psi)	91 bar/turn (1300 psi/turn)

MODULAR VALVE FOR CETOP

MBSN-060-ZTNP

SINGLE ACTING
CETOP 3



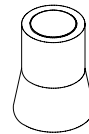
SPECIFICATIONS

Max. operating pressure:	250 bar (3600 psi)
Rated flow:	60 l/min (16 gpm)
Manifold:	Steel
Weight:	0.7 kg (15.4 lbs)
Contamination class to ISO 4406:	See technical spec.
MTF _d :	150 - 1200 years: See technical spec.

NOTES

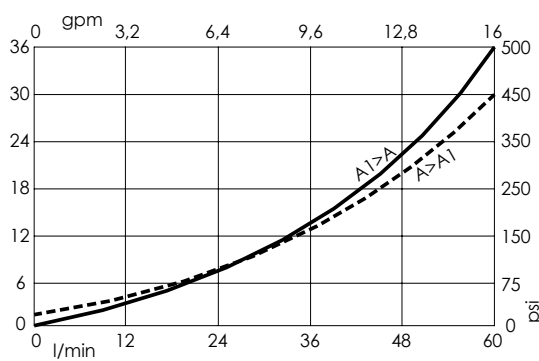
Setting: at the least 1.3 times the load induced pressure.
For other configurations/quick codes not available in this catalogue page please consult factory

SEALING CAP



Ordering code:
AT000020

CURVES



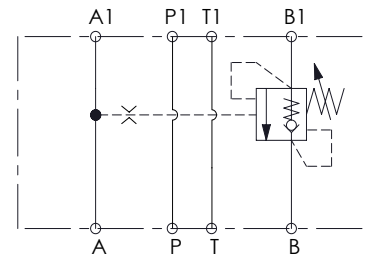
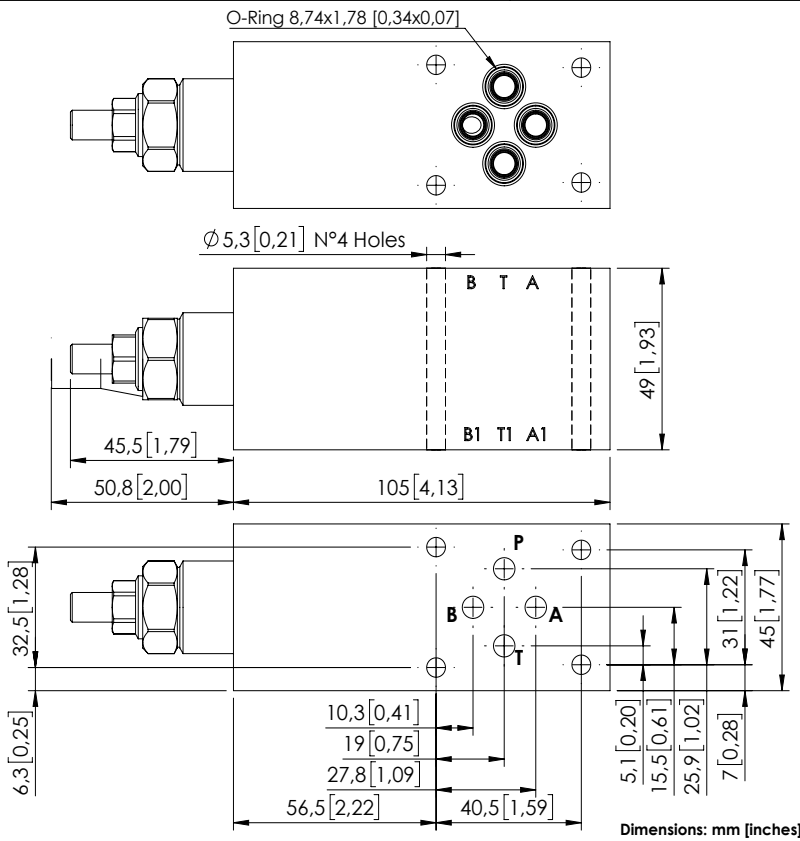
ORDERING CODES

Quick code	Description	Pilot ratio	Ports	Standard setting Q=5 l/min (1.3 gpm)	Adjustment range	Pressure increase
MB000923	MBSN-060-ZTNP-01-N06-N250	1:0	A,B,P,T: CETOP 3	25 bar (360 psi)	3-30 bar (40-450 psi)	5 bar/turn (70 psi/turn)

MODULAR VALVE FOR CETOP

MBSN-060-ARNR

SINGLE ACTING
CETOP 3



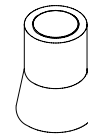
SPECIFICATIONS

Max. operating pressure:	350 bar (5000 psi)
Rated flow:	60 l/min (16 gpm)
Manifold:	Steel
Weight:	1.78 kg (3,92 lbs)
Contamination class to ISO 4406:	See technical spec.
MTTFd:	150 - 1200 years: See technical spec.

NOTES

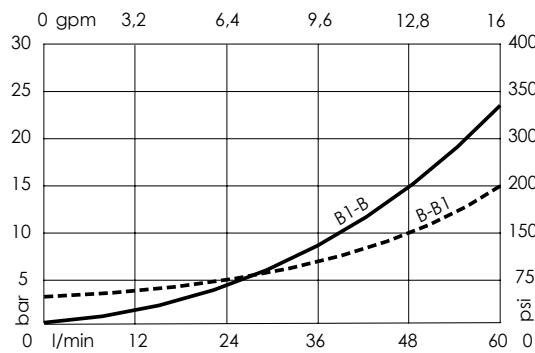
Setting: at least 1.3 times the load induced pressure.
For other configurations/quick codes not available in this catalogue page please consult factory

SEALING CAP



Ordering code:
AT000020

CURVES



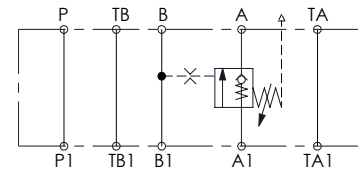
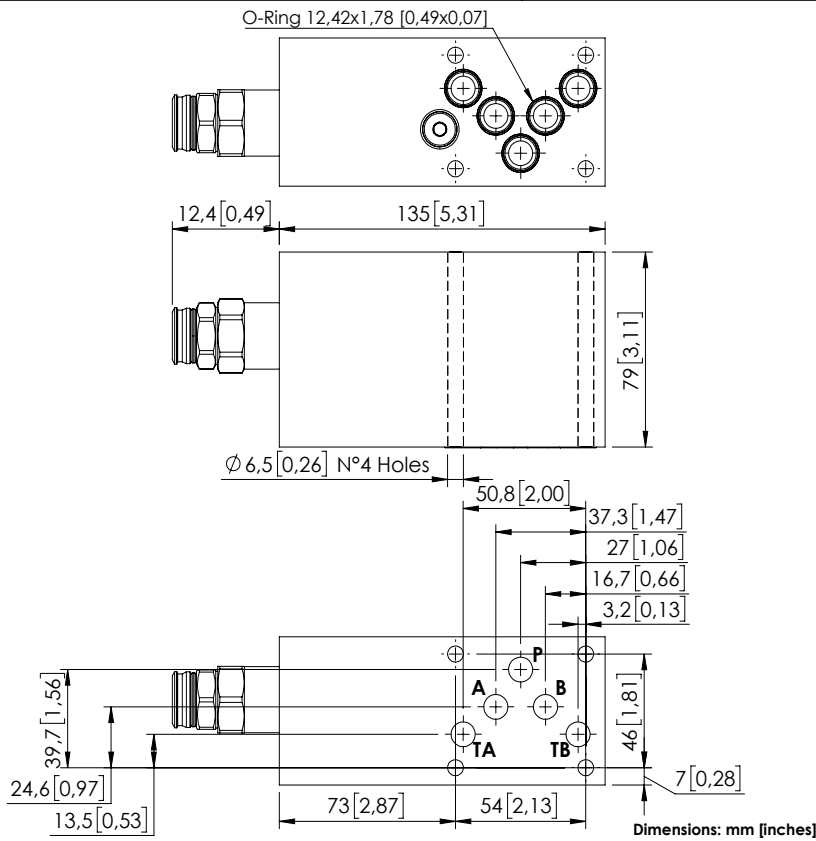
ORDERING CODES

Quick code	Description	Pilot ratio	Ports	Standard setting Q=5 l/min (1,3 gpm)	Adjustment range	Pressure increase
MB000886	MBSN-060-ATNR-04-N06-N350	4,2:1	A,B,P,T: CETOP 3	350 bar (5000 psi)	100-350 bar (1400-5000 psi)	139 bar/turn (2000 psi/turn)

MODULAR VALVE FOR CETOP

MBST-100-ZTNP

SINGLE ACTING
CETOP 5



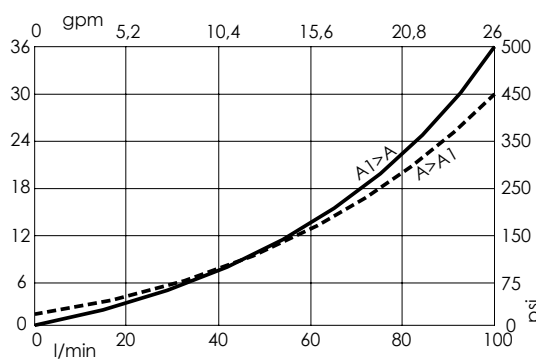
SPECIFICATIONS

Max. operating pressure:	250 bar (3600 psi)
Rated flow:	100 l/min (26 gpm)
Manifold:	Aluminium
Weight:	1,7 kg (3,7 lbs)
Contamination class to ISO 4406:	See technical spec.
MTF _d :	150 - 1200 years: See technical spec.

NOTES

Setting: at least 1.3 times the load induced pressure.
For other configurations/quick codes not available in this catalogue page please consult factory

CURVES



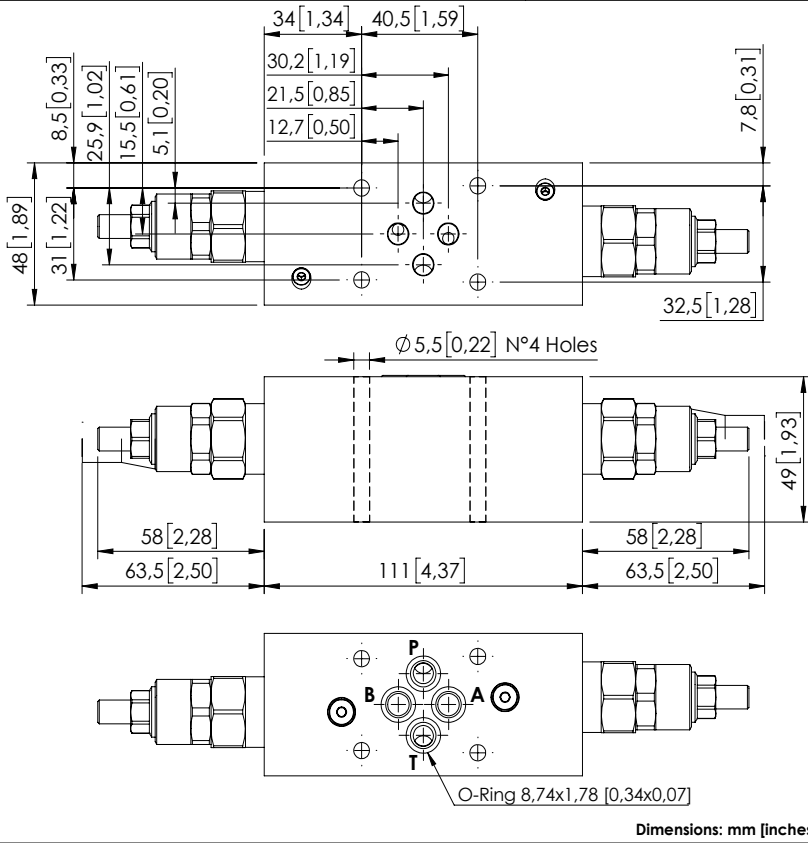
ORDERING CODES

Quick code	Description	Pilot ratio	Ports	Standard setting Q=5 l/min (1.3 gpm)	Adjustment range	Pressure increase
MB000924	MBST-100-ZTNP-01-N10-N250	1:0	A,B,P,T: CETOP 5	10 bar (150 psi)	3-25 bar (40-350 psi)	8 bar/turn (120 psi/turn)

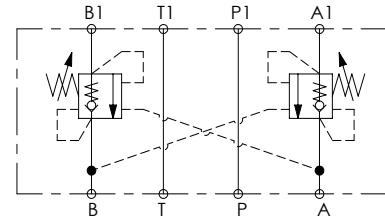
MODULAR VALVE FOR CETOP

MBDN-030-LTNR

DOUBLE ACTING
CETOP 3



Dimensions: mm [inches]



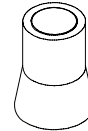
SPECIFICATIONS

Max. operating pressure:	210 bar (3000 psi)
Rated flow:	30 l/min (8 gpm)
Manifold:	Aluminium
Weight:	1 kg (2,2 lbs)
Contamination class to ISO 4406:	See technical spec.
MTTFd:	150 - 1200 years: See technical spec.

NOTES

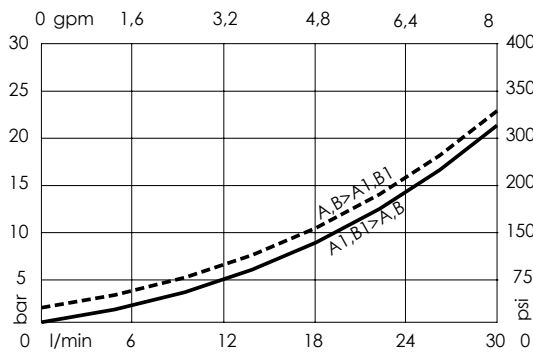
Setting: at least 1.3 times the load induced pressure.
For other configurations/quick codes not available in this catalogue page please consult factory

SEALING CAP



Ordering code:
A1000020

CURVES



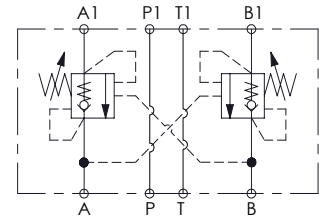
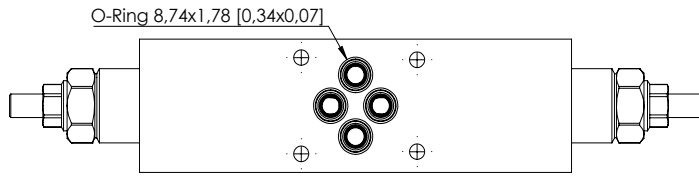
ORDERING CODES

Quick code	Description	Pilot ratio	Ports	Standard setting Q=5 l/min (1,3 gpm)	Adjustment range	Pressure increase
MB000917	MBDN-030-LTNR-04-N06-N210	4:1	A, B, P, T: CETOP 3	200 bar (2900 psi)	70-210 bar (1000-3000 psi)	94 bar/turn (1300 psi/turn)

MODULAR VALVE FOR CETOP

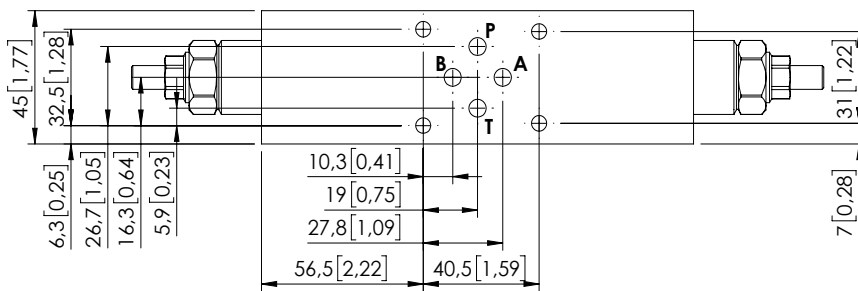
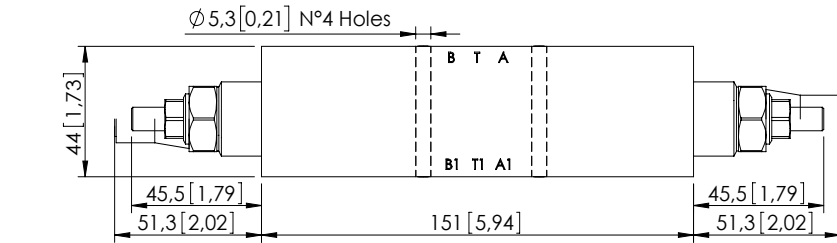
MBDN-060-ZTNR

DOUBLE ACTING
CETOP 3



SPECIFICATIONS

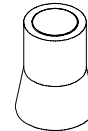
Max. operating pressure:	350 bar (5000 psi)
Rated flow:	60 l/min (16 gpm)
Manifold:	Aluminium
Weight:	1,03 kg (2.2 lbs)
Contamination class to ISO 4406:	See technical spec.
MTF _a :	150 - 1200 years: See technical spec.



NOTES

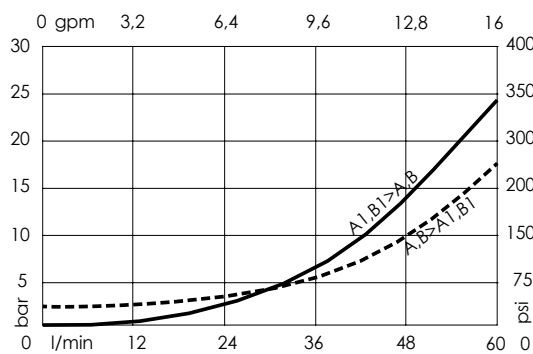
Setting: at least 1.3 times the load induced pressure.
For other configurations/quick codes not available in this catalogue page please consult factory

SEALING CAP



Ordering code:
AT000020

CURVES



ORDERING CODES

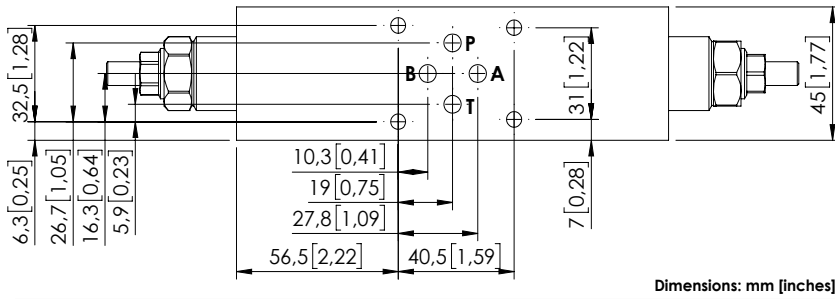
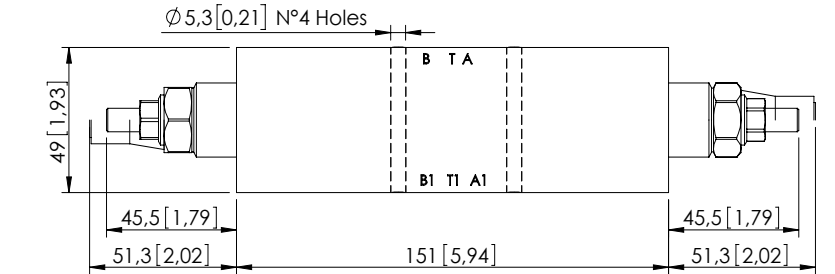
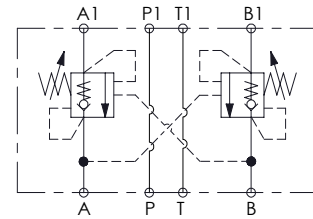
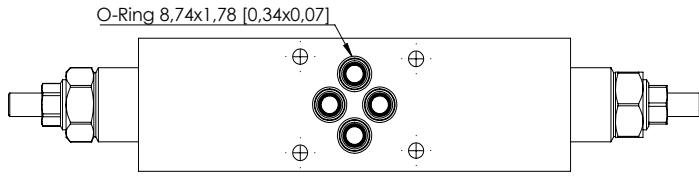
Quick code	Description	Pilot ratio	Ports	Standard setting Q=5 l/min (1,3 gpm)	Adjustment range	Pressure increase
MB000517	MBDN-060-ZTNR-04-N06-N350	4,2:1	A,B,P,T: CETOP 3	350 bar (5000 psi)	100-350 bar (1400-5000 psi)	138 bar/turn (2000 psi/turn)
MB000546	MBDN-060-ZTNR-04-N06-N200	4,2:1	A,B,P,T: CETOP 3	200 bar (2900 psi)	60-210 bar (850-3000 psi)	62 bar/turn (850 psi/turn)

Revision B1

MODULAR VALVE FOR CETOP

MBDN-060-ATNR

DOUBLE ACTING
CETOP 3



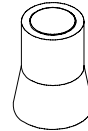
SPECIFICATIONS

Max. operating pressure:	350 bar (5000 psi)
Rated flow:	60 l/min (16 gpm)
Manifold:	Steel
Weight:	2,61 kg (5,7 lbs)
Contamination class to ISO 4406:	See technical spec.
MTF _d :	150 - 1200 years: See technical spec.

NOTES

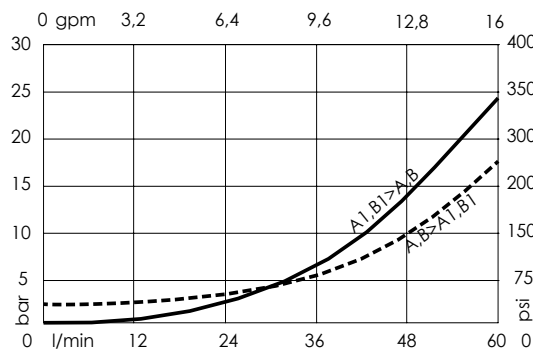
Setting: at least 1.3 times the load induced pressure.
For other configurations/quick codes not available in this catalogue page please consult factory

SEALING CAP



Ordering code:
AT000020

CURVES



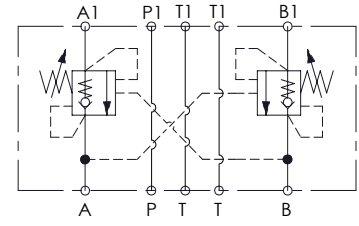
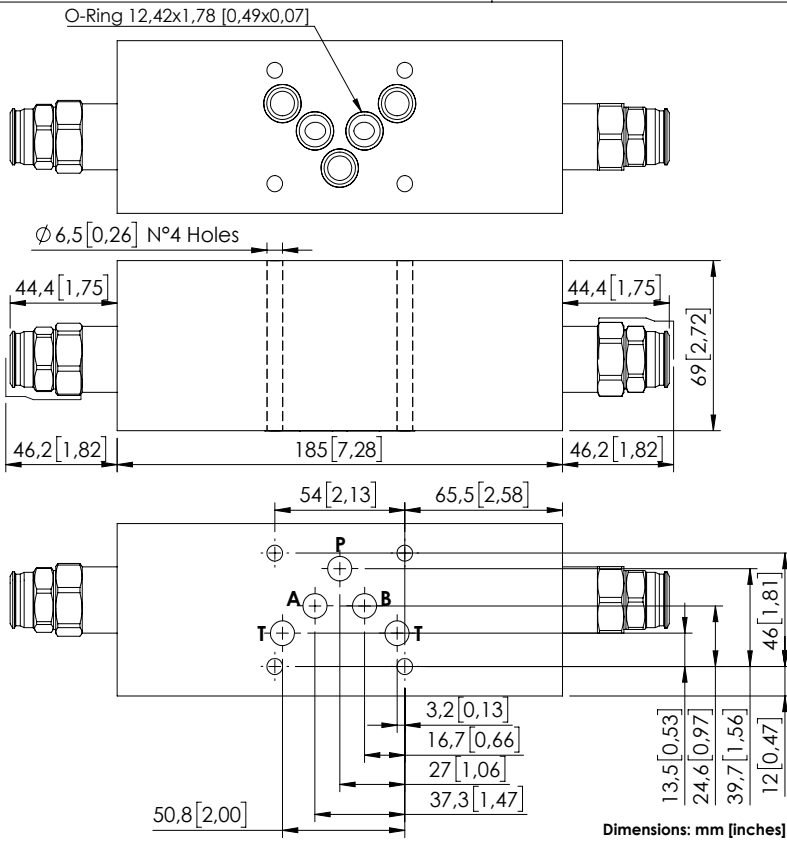
ORDERING CODES

Quick code	Description	Pilot ratio	Ports	Standard setting Q=5 l/min (1,3 gpm)	Adjustment range	Pressure increase
MB000929	MBDN-060-ATNR-04-N06-N350	4,2:1	A,B,P,T: CETOP 3	350 bar (5000 psi)	100-350 bar (1400-5000 psi)	138 bar/turn (2000 psi/turn)
MB000774	MBDN-060-ATNR-04-N06-N200	4,2:1	A,B,P,T: CETOP 3	200 bar (2900 psi)	60-210 bar (850-3000 psi)	62 bar/turn (850 psi/turn)

MODULAR VALVE FOR CETOP

MBDN-100-ZTNR

DOUBLE ACTING
CETOP 5



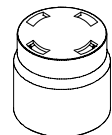
SPECIFICATIONS

Max. operating pressure:	350 bar (5000 psi)
Rated flow:	100 l/min (26 gpm)
Manifold:	Aluminium
Weight:	2,64 kg (5,8 lbs)
Contamination class to ISO 4406:	See technical spec.
MTF _d :	150 - 1200 years: See technical spec.

NOTES

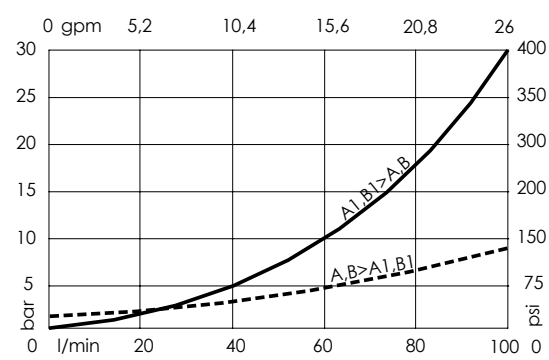
Setting: at least 1.3 times the load induced pressure.
For other configurations/quick codes not available in this catalogue page please consult factory

SEALING CAP



Ordering code:
PT000243

CURVES



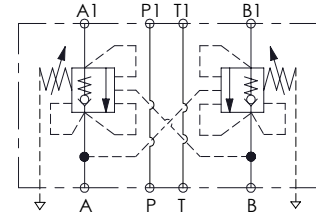
ORDERING CODES

Quick code	Description	Pilot ratio	Ports	Standard setting Q=5 l/min (1,3 gpm)	Adjustment range	Pressure increase
MB000916	MBDN-100-ZTNR-04-N10-N350	4:1	A,B,P,T: CETOP 5	350 bar (5000 psi)	100-350 bar (1400-5000 psi)	118 bar/turn (1700 psi/turn)

MODULAR VALVE FOR CETOP

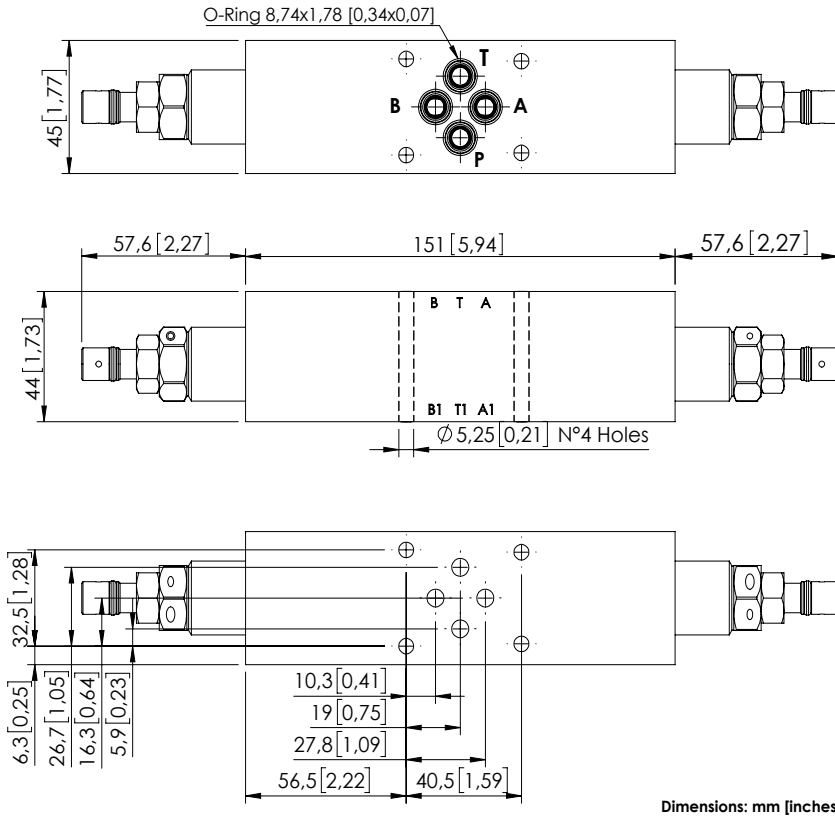
MBDP-060-ZTNR

DOUBLE ACTING
CETOP 3



SPECIFICATIONS

Max. operating pressure:	350 bar (5000 psi)
Rated flow:	60 l/min (16 gpm)
Manifold:	Aluminium
Weight:	1,09 kg (2.2 lbs)
Contamination class to ISO 4406:	See technical spec.
MTF _a :	150 - 1200 years: See technical spec.

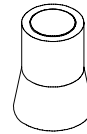


Dimensions: mm [inches]

NOTES

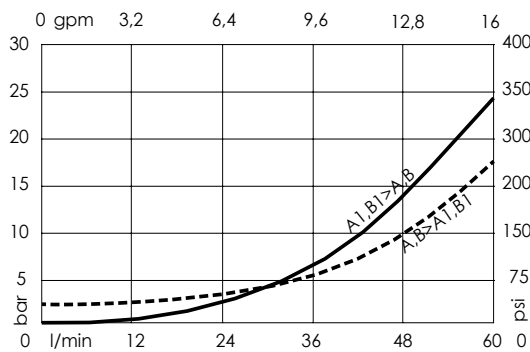
Setting: at least 1.3 times the load induced pressure.
For other configurations/quick codes not available in this catalogue page please consult factory

SEALING CAP



Ordering code:
AT000020

CURVES



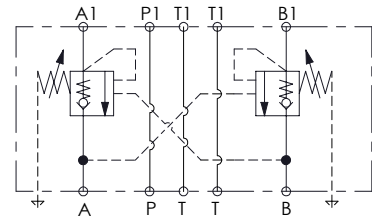
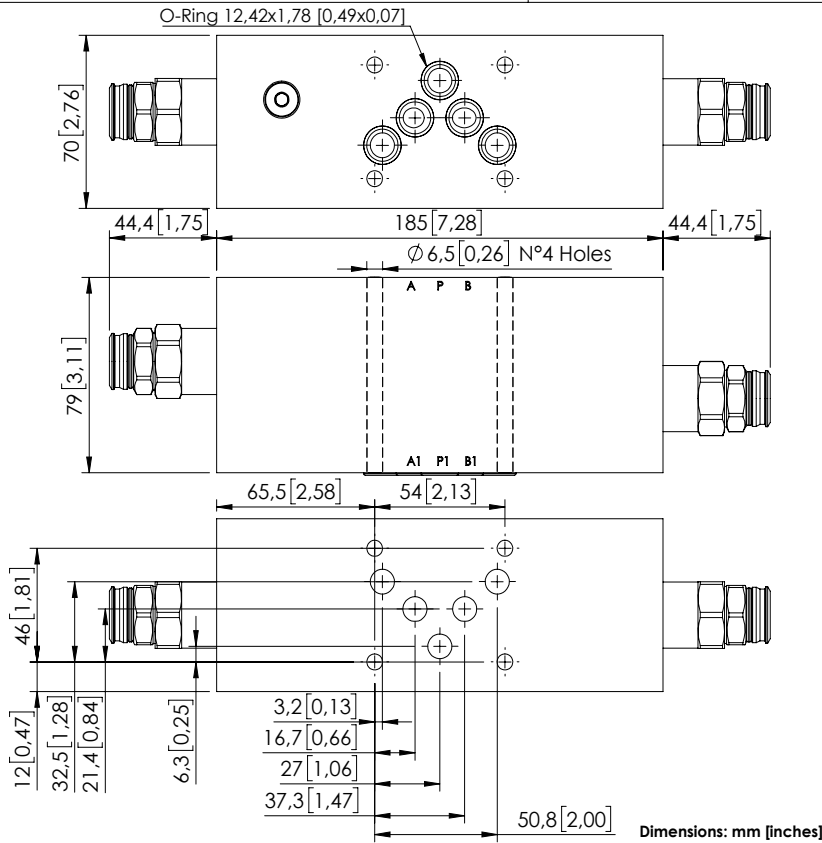
ORDERING CODES

Quick code	Description	Pilot ratio	Ports	Standard setting Q=5 l/min (1,3 gpm)	Adjustment range	Pressure increase
MB000454	MBDP-060-ZTNR-04-N06-N350	4,2:1	A,B,P,T: CETOP 3	350 bar (5000 psi)	100-350 bar (1400-5000 psi)	166 bar/turn (2400 psi/turn)

MODULAR VALVE FOR CETOP

MBDT-100-ARNR

CETOP 5



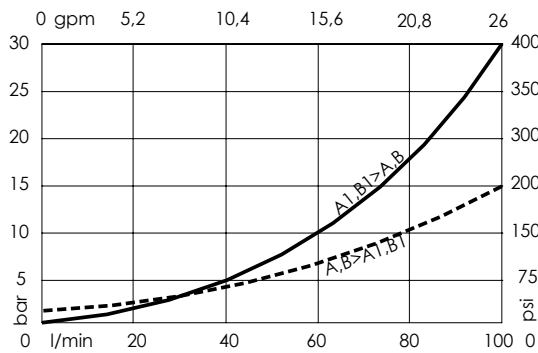
SPECIFICATIONS

Max. operating pressure:	350 bar (5000 psi)
Rated flow:	100 l/min (26 gpm)
Manifold:	Steel
Weight:	7,7 kg (14 lbs)
Contamination class to ISO 4406:	See technical spec.
MTTFa:	150 - 1200 years: See technical spec.

NOTES

Setting: at least 1.3 times the load induced pressure.
 For other configurations/quick codes not available in this catalogue page please consult factory

CURVES



ORDERING CODES

Quick code	Description	Pilot ratio	Ports	Standard setting Q=5 l/min (1.3 gpm)	Adjustment range	Pressure increase
MB000930	MBDT-100-ATNR-04-N10-N350	3,8:1	A,B,P,T: CETOP 5	350 bar (5000 psi)	100-350 bar (1400-5000 psi)	118 bar/turn (1700 psi/turn)