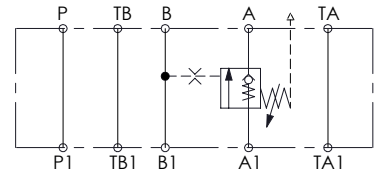
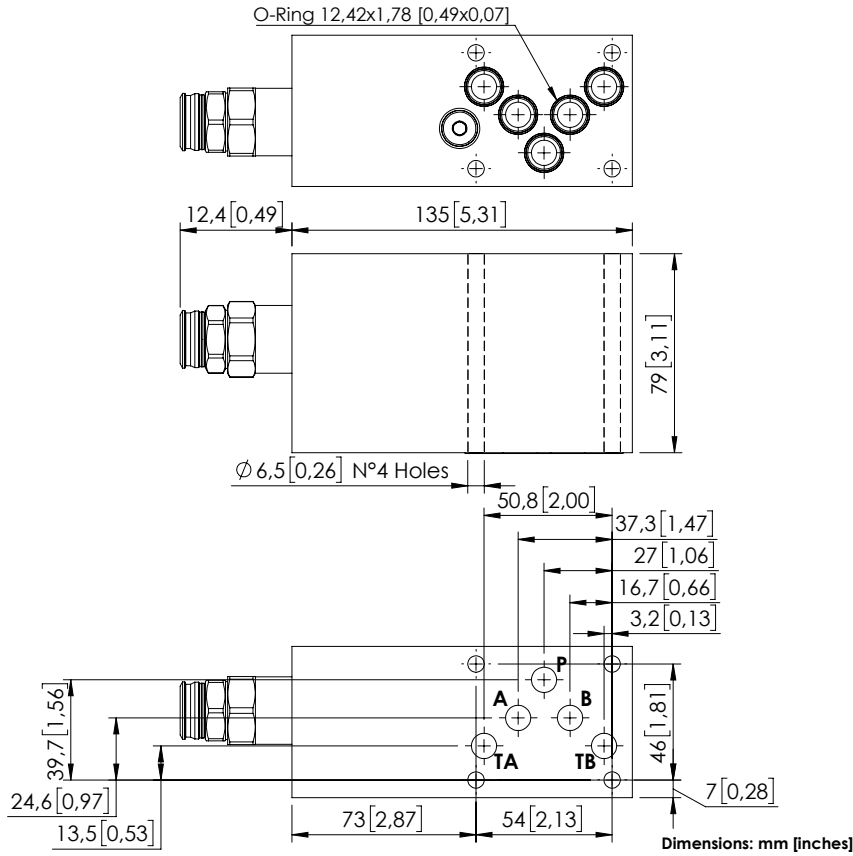


MBST-100-ZTNP

SINGLE ACTING
CETOP 5



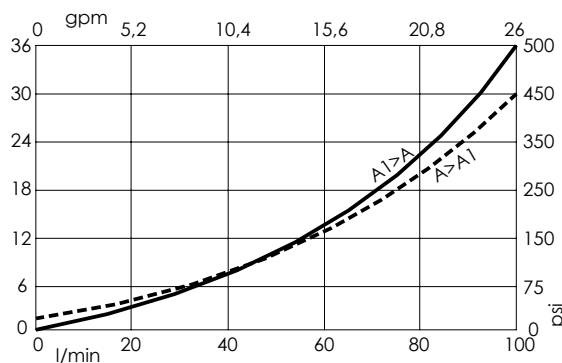
SPECIFICATIONS

Max. operating pressure:	250 bar (3600 psi)
Rated flow:	100 l/min (26 gpm)
Manifold:	Aluminium
Weight:	1,7 kg (3,7 lbs)
Contamination class to ISO 4406:	See technical spec.
MTFa:	150 - 1200 years: See technical spec.

NOTES

Setting: at least 1.3 times the load induced pressure.
For other configurations/quick codes not available in this catalogue page please consult factory

CURVES



ORDERING CODES

Quick code	Description	Pilot ratio	Ports	Standard setting Q=5 l/min (1,3 gpm)	Adjustment range	Pressure increase
MB000924	MBST-100-ZTNP-01-N10-N250	1:0	A,B,P,T: CETOP 5	10 bar (150 psi)	3-25 bar (40-350 psi)	8 bar/turn (120 psi/turn)