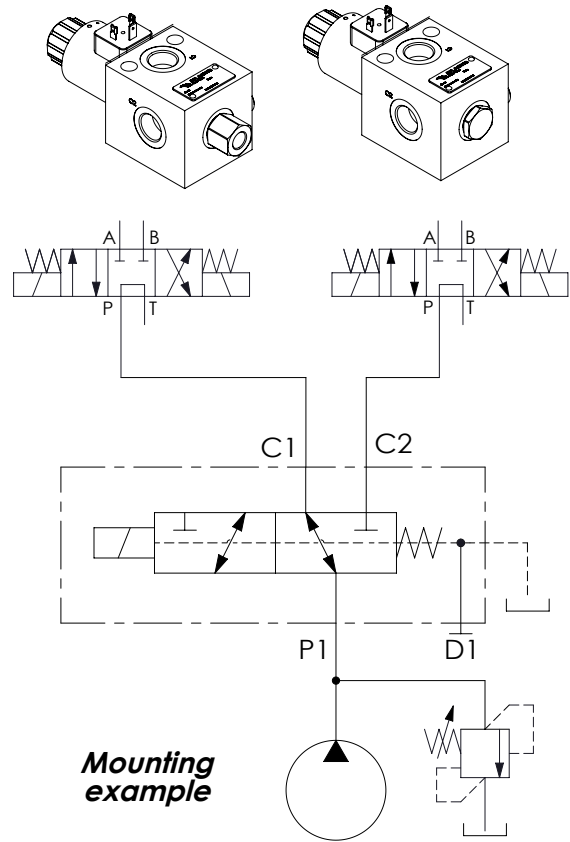


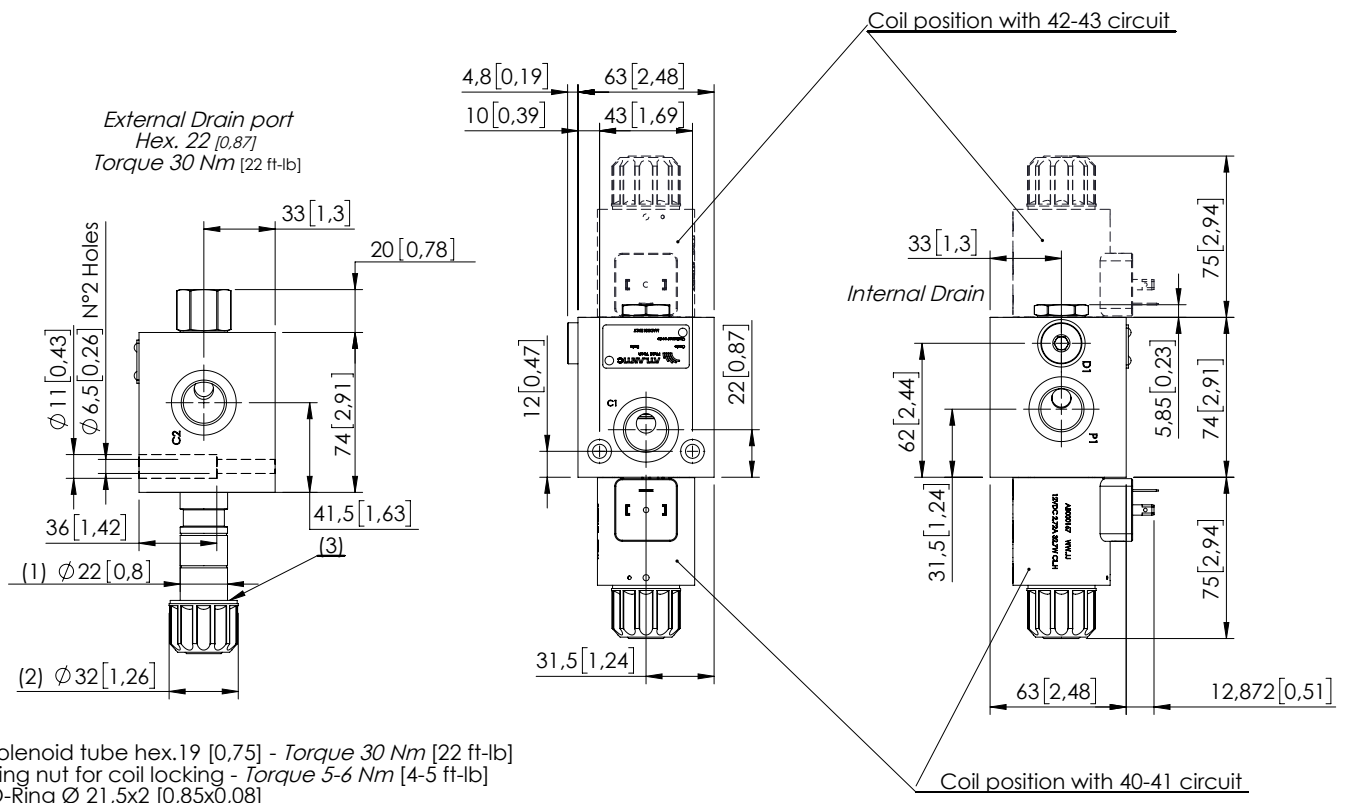
**	Circuit	Transit position
40		
41		
42		
43		



Technical data		
Rated flow		l/min (gpm) 100 (26)
Operating pressure	with internal drain "N"	bar (psi) 250 (3600)
	with external drain "E"	bar (psi) 310 (4500)
Valve weight		Kg (lb) 2,6 (5,7)

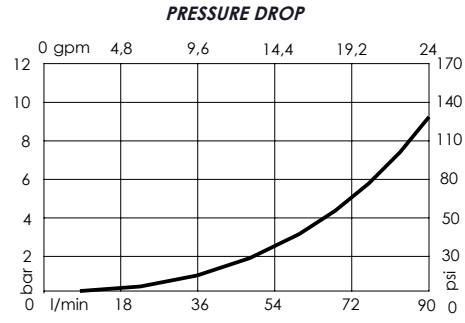
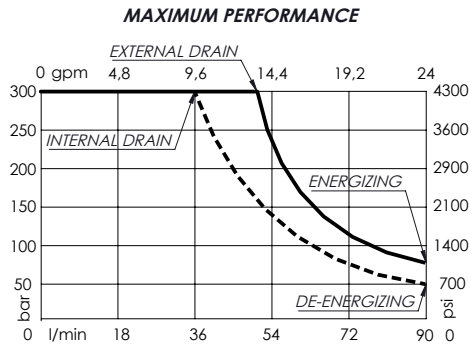
OVERALL DIMENSIONS

Dimensions: mm [inches]



Characteristic curves

Measured with hydraulic fluid ISO-VG46 at 40°±5°C (104° F ± 41° F)



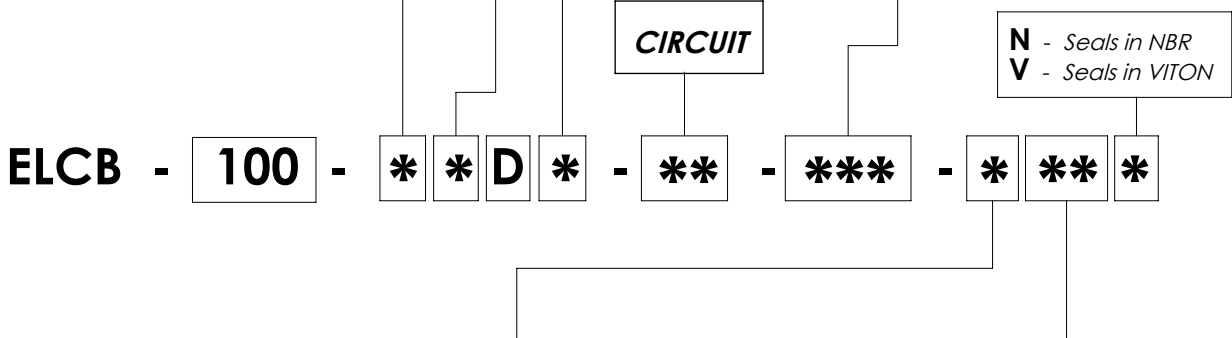
Internal leakage on C ports: MAX 25 cm³/min (1.5 in³/min) Mineral oil with 32 cSt viscosity, at 40° C (104° F) and 100 bar (1400 psi) pressure.

* OPERATED	Circuit
E Electric 	
N Hydraulic/pneumatic <p>(4) Hydraulic or pneumatic pilot connector: Torque 20-22 Nm [15-16 ft-lb] With external drain Pilot Pressure Min. 5 bar [70 psi] With internal drain Pilot Pressure is 1/10 of the working pressure</p>	

* MANUAL OVERRIDE
S Standard
V Screw
N Without manual override

* DRAIN	Circuit
N Internal	
E External	

PORTS		
***	Main (C)	Drain (D)
G12	1/2" Gas	1/4" Gas
Other port sizes available		



* Voltage (V)	Resistance (Ω) ± 7%	Power (W)	Current (A)
-	Without coil		
A 12 DC	4,41	32,7	2,72
B 24 DC	18,6	31	1,29
Other voltages available on request			

* COIL	Type	Protection class
-	Without coil	
HR DIN 43650 - ISO 4400 Class H	M12	IP65
AJ AMP JUNIOR Class H	M12	IP65
DT DEUTSCH DT04-2P-L Class H	M12	IP69