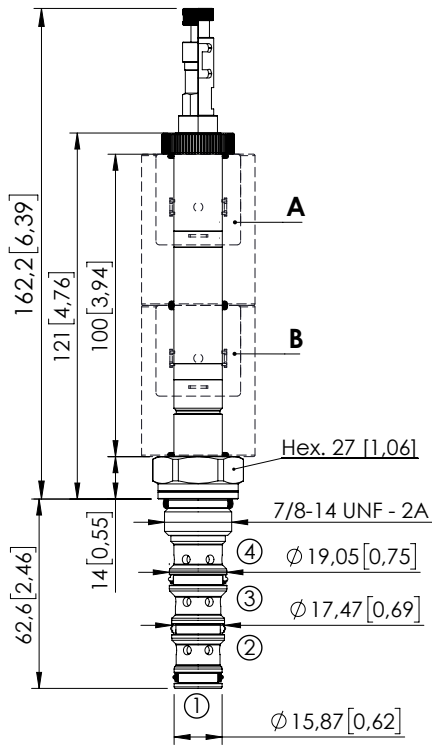
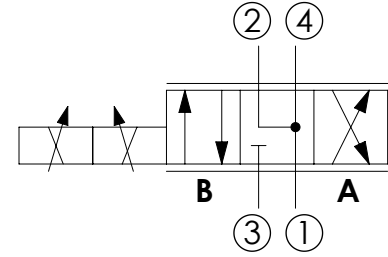


CEES-030-SEPN-52

DIRECT OPERATED
SPOOL TYPE



Dimensions: mm [inches]



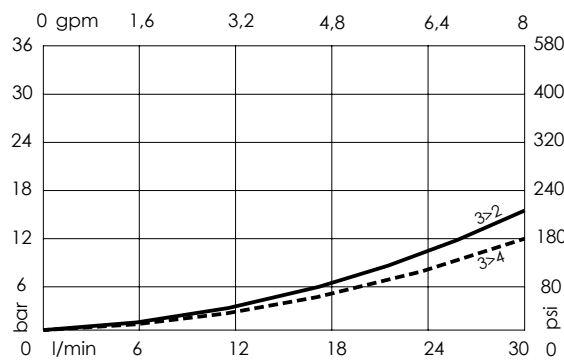
SPECIFICATIONS

Max. operating pressure:	350 bar (5000 psi)
Max. operating pressure on port 1:	210 bar (3000 psi)
Rated flow:	30 l/min (8 gpm)
Cavity:	SAE-10-4N
Weight:	0.20 kg (0.68 lbs)
Min. voltage required:	90% of nominal
Coil type:	M16
Ambient temperature:	-20/+50 °C (-4/+122 °F)
PWM range recommended:	100 Hz
Contamination class to ISO 4406:	See technical spec.
Seal kit:	RB600102
Installation torque:	55 - 62 Nm (41 - 46 ft-lb)
MTF _d :	150 - 1200 years: See technical spec.
Leakage:	120 cm ³ /min (@46 cSt) 7.3 in ³ /min (@46 cSt)

NOTES

For other configurations/quick codes not available in this catalogue page please consult factory

OPTIONS



ORDERING CODES

Quick code	Description	Options
CE001856	CEES-030-SEPN-52-S10-N350	Standard
CE001857	CEES-030-SEPL-52-S10-N350	Push and pull manual override
CE001858	CEES-030-SEPG-52-S10-N350	Push pull and twist manual override